

People & Organization Development (POD) grow.berkeley.edu

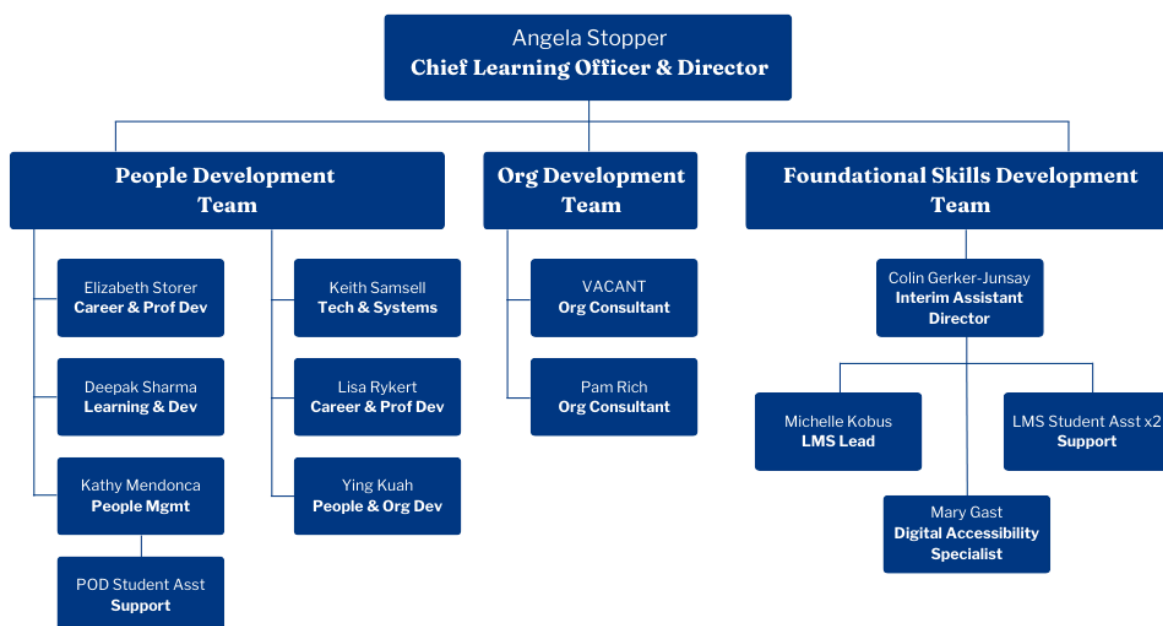
Team Portfolios

Table of Contents

P.1-2	Org Chart	Organizational Structure, Team Photos
P.3	Angela Stopper	Chief Learning Officer, Director of POD
P.4	Colin Gerker-Junsay	Interim Assistant Director
P.5	Deepak Sharma	Specialist, Learning & Development
P.6	Elizabeth Storer	Specialist, Career & Professional Development
P.7	Kathy Mendonca	Senior Specialist, Instructional Design & Learning
P.8	Keith Samsell	Training Lead
P.9	Lisa Rykert	Lead, Career & Professional Development
P.10	Mary Gast	Digital Accessibility Specialist
P.11	Michelle Kobus	Administrator, Learning Management System
P.12	Pamela Rich	Senior Consultant, Organization Development
P.13	Ying Kuah	Lead, People & Organization Development
P.14	Guidebook	List of Facilitators per Workshop, Training, Program
P.27	POD Partners	People & Organization Development Collaborators



People & Organization Development Structure



[Navigating Berkeley People & Culture's GROW Website \(18 min video\)](#)
[POD Services \(high-level\)](#)
[POD Services \(in-depth\)](#)
[POD Course Evaluation Survey Results](#)

People & Organization Development Team



Angela Stopper



**Colin
Gerker-Junsay**



**Deepak
Sharma**



**Elizabeth
Storer**



**Kathy
Mendonca**



**Keith
Samsell**



**Lisa
Rykert**



**Mary
Gast**



**Michelle
Kobus**



**Pamela
Rich**



**Ying
Kuah**

Angela Stopper PhD (she/her)

Chief Learning Officer & Director

[LinkedIn](#) | 814-360-8147 | astopper@berkeley.edu



Key Job Functions

Program/Project Management:

- New Program Development and Piloting
- [NOW Conference](#) Sponsor
- [People & Organization Development team](#) Director
- [Sponsored Tuition Program](#) Sponsor
- [UC Berkeley People & Culture Leadership Team](#) Member
- [UC Systemwide](#) Contributor and Collaborator

Trainer/Facilitator:

- [BECAR 106 Projecting Confidence and Making an Impact](#)
- [BECAR 152 Engaging Your Competencies and Values to Build Your Best Future](#)
- [BPM 101 Principles of People Management](#)
- [BPM 211 How Communication Preferences Impact Team Success](#)
- [BPM 360 Degree Assessment Introduction](#)
- [BPM 360 Degree Assessment Report](#)
- [BPM 302 Driving Vision & Purpose with Organizational Savvy](#)

Other Projects and Collaborations:

- [Focused 90°](#) Coach
- [Korn Ferry 360](#) leadership assessment and coaching Certified
- [UCB Faculty Leadership Academy](#) Project Team
- [Workforce planning](#) consultations and thoughts partnership

Skills/Research Areas

Learning and Development, Talent Development, Workforce Planning and Optimization, Organization Development, Executive Coaching, Human Resources, Online Learning, Service Marketing, Leadership Competency Model Creation and Development Planning, Team Leadership, Strategic Planning, Succession Planning, Budget Creation and Management, DEBIJA+, Succession Planning, Keynote and Industry Conference Speaker, Author, Podcast Guest

Professional Affiliations/Staff Organizations

Faculty member, Penn State's Master of Professional Studies in OD & Change; Illumeo course author and instructor; Board Member, Association for Talent Development (ATD); Editorial Adviser for Chief Talent Development Officer (CTDO) Magazine; Member of the Review Board for the Journal of Management Development; Member, PEER 150 (Human Resources); Member, OnCon Senior L&D Council; Contributing researcher for Rothwell & Associates; Mentor for Berkeley Staff Assembly Mentorship Program; Member of Cal Women's Network (CWN)

Colin Gerker-Junsay (he/him)

Interim Assistant Director

[LinkedIn](#) | 858-210-5842 | colinje@berkeley.edu



Key Job Functions

Program/Project Management:

- [Achieve Together](#) Program Manager for UC Berkeley
- [Foundational Skills](#) UC Learning Center Team Lead
- [Flexible Work Agreements](#) Lead
- [Focused 90 Feedback Program](#) Lead
- [BPM Executive Coaching Program](#) Co-Lead
- [Advising & Coaching Program](#) Co-Lead
- [Grow on the Go Library](#) Lead
- [Grow Your Impact Consultant](#) Sr. Consultant

Trainer/Facilitator:

- [BPM 104 Goals, Objectives, and Key Results](#)
- [BECAR / BPM 105 Achieve Together Performance Program](#)
- [BPM 205 Delegation Skills](#)
- [BPM 206 Growing as a Coach](#)
- [BPM 211 How Communication Preferences Impact Team Success](#)
- [BPM Executive Coaching Program: Growing Your Coachability](#)
- [BPM Executive Coaching Program: Intro to Korn Ferry 360](#)
- [BPM Executive Coaching Program: Korn Ferry 360 Group Report Analysis and Development Planning](#)
- [BPM Executive Coaching Program: Peer Coaching/Coaching Circles](#)
- [BPM Part 4 Grow the Organization](#) - Cohort Group Coach
- [Workshops](#): CliftonStrengths, DiSC, Whole Brain, Change Style, 6 Working Geniuses

Other Projects and Collaborations:

- Supervision of 2 student workers, & Digital Accessibility Specialist in partnership w/bIT
- [Korn Ferry 360](#) leadership assessment and coaching Certified
- Learning & Program Design: eLearning, Learning strategy, job-aids, guides, media
- [Management Skills Assessment Program \(MSAP\)](#) Assessor

Skills/Research Areas

Strategic Advising, Consulting, Coaching, Project Management, Process Improvement, Change Management, Communication Strategy, Nonprofit Management, DDI Certified Facilitator, Deliberative Dialogue Certified

Professional Affiliations/Staff Organizations

Member of Chancellor's Advisory Committee on LGBTQIA+ Communities; Member of LavenderCal; Co-chair of Cal Coaching Network; CUPA HR Emerging Leader 2025-2026

Deepak Sharma

Specialist, Learning & Development

[LinkedIn](#) | 562-743-5641 | deepak_sharma@berkeley.edu



Key Job Functions

Program/Project Management:

- [Grow Your Community Portfolio](#) Lead
- [Grow Your Journey Learning Pathways](#) Co-lead
- [LinkedIn Learning](#) Coordinator
- [NOW Conference](#) Planning Committee
- [Staff Service Awards](#) Lead
- [UC Berkeley Women's Initiative](#) Coordinator
- [UC Peer Connection Community](#) Lead
- [UC Women's Initiative for Professional Development](#) Coordinator (on hold while we await guidance from the systemwide office)
- [Wisdom Cafe Wednesday Newsletter](#) Lead

Trainer/Facilitator:

- [BPM 204 Building Teams](#)

Other Projects and Collaborations:

- [Custom workshops and services](#) for staff orgs and departments/units

Skills/Research Areas

Training Presentation and Facilitation, Organizational Goal Setting, Experiential Learning, Online Training Tech Support, Employee Engagement, Mentoring

Professional Affiliations/Staff Organizations

Member of Association for Talent Development; Member of National Association of Student Personnel Administrators; Formerly Association of College Unions International

Elizabeth Storer (she/her)

Career and Professional Development Specialist

[LinkedIn](#) | 916-417-5083 | estorer@berkeley.edu



Key Job Functions

Program/Project Management:

- [Grow Your Journey Learning Pathways](#) Co-lead
- [Management Skills Assessment Program \(MSAP\)](#) Coordinator
- [NOW Conference: Coaching HQ](#) Lead
- [Skills for Success: Unlocking Your UC Berkeley Career](#) Lead
- [Staff Fellowship Program](#) Lead
- [Transferable Skills Library](#) Lead

Trainer/Facilitator:

- [Achieving Project Success Skills: Project Management and Ensuring Accountability](#)
- [BECAR 100 10+ Resources to 10X Your Career Planning](#)
- [BPM 202 Communicating with Impact](#)
- [Enhancing Verbal Communication Skills: Giving Impactful Presentations and Organizing Information Effectively](#)
- [Impactful Written Communication Skills: Using Writing to Boost Critical Thinking and Program Solving](#)
- [Leveraging Strategic Leadership Skills: Planning, Alignment, and Stewardship of University Resources](#)
- [Maximizing Productivity Skills: Time Management, Decision Making, and Prioritization Strategies](#)

Other Projects and Collaborations:

- [CliftonStrengths facilitation](#) for departments/units
- CliftonStrengths 1:1 coaching
- [One-on-one staff Career Coaching](#)

Skills/Research Areas

Career Coaching, Career Planning and Exploration, Cliftonstrengths, Training And Facilitation, Goal Setting, Team Building

Professional Affiliations/Staff Organizations

Certified Gallup CliftonStrengths Coach; Certificate in ProSci Change Management; ATD (Association for Talent Development) Training and Facilitation Certificate; Member of Sacramento Chapter of International Coaching Federation (ICF); Member of Cal Coaching Network (CCN); Member of Berkeley Staff Assembly (BSA)

Kathy Mendonca (she/her)

Senior Specialist, Instructional Design & Learning

[LinkedIn](#) | 510-642-5942 | kmendonca@berkeley.edu



Key Job Functions

Program/Project Management:

- [Berkeley People Management Series and Certificate Program \(BPM\)](#) Coordinator and Lead
- [Berkeley People Management: Power Skills Series and Certificate](#) Systemwide Coordinator
- [Development for Leaders](#) Content Manager

Trainer/Facilitator:

- [BPM 104 Communicating Goals, Objectives & Key Results](#)
- [BPM 105 Achieve Together Performance Program](#)
- [BPM 204 Building Teams](#)
- [BPM 205 Delegation Skills](#)
- [BPM 207 Leading Change](#)
- [BPM 303 Exercising Influence](#)
- [BPM 307 Do What Matters Most](#)

Other Projects and Collaborations:

- Supervision: POD student assistant

Skills/Research Areas

Instructional Design, Instructor-Led Training Delivery, Facilitation, Program Management, Leadership Development, Goal Setting, Delegation, Team Building, Change Management, Influence

Professional Affiliations/Staff Organizations

Member of Association for Talent Development (ATD); Member of Berkeley Facilitators Network (BFN); Member of Berkeley Staff Assembly (BSA); Member of Cal Women's Network (CWN)

Keith Samsell

Training Lead

[LinkedIn](#) | 510-643-7973 | ksamsell@berkeley.edu

Key Job Functions

Program/Project Management:

- [Technology and Systems Portfolio](#) Lead

Trainer/Facilitator:

- [Databases: 8 Courses](#)
- [Documentation and Desktop Publishing: 6 Courses](#)
- [Power Integrations: 10 Courses](#)
- [Presentations and Multimedia: 3 Courses](#)
- [Project Management and Productivity: 9 Courses](#)
- [Spreadsheets: 13 Courses](#)
- [Survey Data Collection: 3 Courses](#)
- [Web Technologies: 3 Courses](#)

Other Projects and Collaborations:

- [Instructional Design Consultations](#)
- [One-on-one learning support and coaching](#)
- [Process Improvement and Automation Consultations](#)

Skills/Research Areas

Organization Development, Instructional Design, eLearning, Technology Training, Project Management, Process Improvement, Multimedia Production, Technical Writing

Professional Affiliations/Staff Organizations

Member of Association for Talent Development; Member of Educause; Member of Society for Human Resource Management



Lisa Rykert (she/her)

Lead, Career & Professional Development

[LinkedIn](#) | 415-215-5472 | lrykert@berkeley.edu

Key Job Functions

Program/Project Management:

- [Career Coaching Services](#) Lead
- Career Coaching Staff Fellowship Lead and Coach-Mentor
- [Grow Your Career: Workshop Portfolio](#) Lead
- [Grow Your Journey Learning Pathways](#) Co-lead
- [NOW Conference](#) Co-Chair
- [NOW Conference Encore Series](#) Lead/Content Mgr



Trainer/Facilitator:

- [BECAR 100 10+ Resources to 10X Your Career Planning](#)
- [BECAR 181 Get in Gear for a Breakthrough Year in Your Career!](#)
- [BECAR 350 Effective Resume Writing](#)
- [BECAR 351 Informational Interviewing](#)
- [BECAR 352 Interviewing for the Job](#)
- [BECAR AT105 Achieve Together: Preparing Yourself for the Conversation with Your Supervisor/Manager](#)
- [BECAR PL101 Cover Letter Writing Practice Lab](#)
- [BECAR PL102 Resume Writing Practice Lab](#)
- [BPM 101 Principles of People Management](#)
- [BPM 210 Building Trust](#)
- [BPM 301 Building Trust](#)

Other Projects and Collaborations:

- Custom workshops and services for staff orgs and departments/units
- [Focused 90°](#) Coach
- [MSAP](#) (Management Skills Assessment Program) Assessor

Skills/Research Areas

Coaching for Results, Career Coaching, Life Coaching, Organization Development, Career Planning, Goal Setting, Creating High-Performance Communities of Belonging, Positive Psychology, Mindfulness

Professional Affiliations/Staff Organizations

Board Certified Coach (BCC); Member of Network for Change and Continuous Improvement (NCCI); Member of Cal Womxn's Network (CWN); Member of Berkeley Staff Assembly (BSA); Mentor for Berkeley Staff Assembly Mentorship Program

Mary Gast (she/her)

Digital Accessibility Specialist

[LinkedIn](#) | 312-730-2837 | mary.gast@berkeley.edu



Key Job Functions

Program/Project Management:

- Lead testing for Digital Accessibility for digital learning materials, primarily eLearning course content
- Partner with campus departments on accessibility remediation
- Provide training and consulting for Digital Accessibility, and ensure Section 508 (WCAG 2.0, level AA) compliance for all courses prior to being added to the UC Learning Center

Skills/Research Areas

Instructional Design, eLearning Course Design and Development, Project Management, Operational Efficiencies, Change Management, LMS Implementation and Administration, Vendor Contract Negotiation and Management, Digital Accessibility Testing and Remediation for Documents and Decks, Digital Accessibility Testing for Websites

Professional Affiliations/Staff Organizations

Member of Association for Talent Development (ATD)

Michelle Kobus

Administrator, Learning Management System (LMS)

[LinkedIn](#) | 510-643-7226 | mkobus@berkeley.edu

Key Job Functions

Program/Project Management:

- [UC Learning Center \(UCLC\)](#) Lead
Course configuration, Report generation, Learning pathway design, System configuration, Analytics, System maintenance, Certification and compliance, User support, System documentation, System integration efforts



Skills/Research Areas

Technology & Business Systems, Operations & Process Improvement, Learner Experience & Engagement, Educational Technology & e-Learning, Evaluation & Assessment, Project Management & Program Transformation

Professional Affiliations/Staff Organizations

Member of Berkeley Staff Assembly (BSA); Member of Association for Talent Development (ATD); Member of National Association of Student Affairs Administrators in Higher Education (NASPA)

Pamela Rich (she/her)

Senior Consultant, Organization Development

[LinkedIn](#) | 510-326-3114 | richpamela@berkeley.edu



Key Job Functions

Program/Project Management:

- [Grow Your Impact Consultant](#): specializing in Strategic Planning, Team Development, Cross-Functional Team Collaborations, Retreat Facilitation, Environmental Scans

Trainer/Facilitator:

- [BPM 210 Building Trust](#)
- [BPM 301 Building Trust](#)
- [BPM Exercising Influence for Collaborative Management](#)
- [Style Preference Workshops](#): DiSC, Whole Brain, Change Style Indicator

Other Projects and Collaborations:

- [Focused 90°](#) Coach
- [Korn Ferry 360](#) leadership assessment and coaching Certified
- [Organization Effectiveness Mastermind Group](#) Founder and Chair
- [NCCI](#) university liaison

Skills/Research Areas

Facilitation, Action Research, Strategic Planning, Team Development, Coaching

Professional Affiliations/Staff Organizations

Coordinating Committee member of Berkeley Facilitators Network (BFN)); Member of Cal Coaching Network (CCN); Mentor for Berkeley Staff Assembly Mentorship Program;; Member and University Liaison of Network for Change and Continuous Innovation (NCCI) Internal Consultants Community of Practice

Ying Kuah (she/her)

Lead, People & Organization Development

[LinkedIn](#) | 510-289-0127 | ying.kuah@berkeley.edu



Key Job Functions

Program/Project Management:

- [BPM Executive Coaching Program](#) Co-Lead
- [NOW Conference](#) Co-Chair
- [Research Administration Professional Development Program \(RAPDP\)](#) Program manager

Trainer/Facilitator:

- [BPM 202 Communicating with Impact](#)
- [BPM 206 Growing as a Coach](#)
- [BPM Executive Coaching Program: Growing Your Coachability](#)
- [BPM Executive Coaching Program: Intro to Korn Ferry 360](#)
- [BPM Executive Coaching Program: Korn Ferry 360 Group Report Analysis and Development Planning](#)
- [BPM Executive Coaching Program: Peer Coaching/Coaching Circles](#)
- [ServiceNow/HR Service Hub](#) training lead
- [Tracker I-9](#) campus work group and training lead

Other Projects and Collaborations:

- [Focused 90°](#) Coach
- Instructions Design (learning strategy, job-aids, and e-learning solutions)
- [Korn Ferry 360](#) leadership assessment administrator and Coach (certified)
- [One-on-one staff Career Coach](#)
- [Strategic planning/team building retreats, custom workshops](#)

Skills/Research Areas

Program Management, Training Facilitation, Coaching, Instructional Design (ILT/e-learning)

Professional Affiliations/Staff Organizations

Member of Association for Talent Development (ATD); Founder & Advisor/Consultant to Cal Coaching Network (CCN); Member of Cal Assessment Network (CAN); Member of Berkeley Facilitators Network (BFN); Member of Asian Pacific American Systemwide Alliance (APASA)

Guidebook: Courses, Program Contacts, Trainers

Guidebook Table of Contents:

[Berkeley People Management Series](#) (BPM)

[Grow Your Career Workshops](#)

[Research Administrator Professional Development Program](#) (RAPDP)

[Skills for Success: Unlocking Your UC Berkeley Career](#)

[Technology & Systems Training](#)

[Other People & Organization Development Programs](#)

Berkeley People Management Series (BPM)

Program Manager - Kathy Mendonca

Part 1: <u>Grow Today Series</u> - E-Learning		
Part 2: <u>Grow Your Knowledge Series</u>		
Principles of People Management	BEBPM101	Lisa Rykert, Angela Stopper
People Management in a Union Environment	BEBPM102	Carrie Ann Colton
Creating an Inclusive Work Environment	BEBPM103	Laura Pulido
Communicating Goals, Objectives & Key Results	BEBPM104	Colin Gerker-Junsay, Kathy Mendonca
Achieve Together Performance Program	BEBPM105	Colin Gerker-Junsay, Kathy Mendonca
Taking Disciplinary Action	BEBPM106	Carrie Ann Colton
ADA & FML	BEBPM107	Matthew Alvarez, Jurrisha Johnson
Recruiting & Hiring Staff	BEBPM108	Tara Herstein, Marc Ovalle Marihart
Compensation & Benefits	BEBPM109	Monica Brown-Buccellato, Scott Dinkelspiel, Sharon Johnson, Gabe Schmidt
Foundational Finance	BEBPM110	Dara Efron, Kevin Mack
Part 3: <u>Grow Your Team Series</u>		
Employee Engagement	BEBPM201	Shirley Giraldo, Laura Pulido
Communicating with Impact	BEBPM202	Ying Kuah, Elizabeth Storer
Analyzing & Resolving Conflict	BEBPM203	Cedar Carlton, Eugene Whitlock
Building Teams	BEBPM204	Kathy Mendonca, Deepak Sharma

Delegation Skills	BEBPM205	Colin Gerker-Junsay, Kathy Mendonca
Growing as a Coach	BEBPM206	Colin Gerker-Junsay, Ying Kuah
Leading Change	BEBPM207	Jan Crosbie-Taylor, Kathy Mendonca
Management Tools to Reduce Stress & Burnout	BEBPM208	Pierre Khawand
Building Trust	BEBPM210	Pamela Rich, Lisa Rykert
How Communication Preferences Impact Team Success	BEBPMDISC	Colin Gerker-Junsay, Angela Stopper
Part 4: <u>Grow The Organization Series</u> - Cohort-based Program		
Korn Ferry 360 Degree Assessment Introduction	BEBPM360I	Angela Stopper
Korn Ferry 360 Degree Assessment Report	BEBPM360R	Angela Stopper
Building Trust	BEBPM301	Pamela Rich, Lisa Rykert
Driving Vision & Purpose with Organizational Savvy	BEBPM302	Angela Stopper
Exercising Influence for Collaborative Management	BEBPM303	Kathy Mendonca, Pamela Rich
Critical Thinking & Problem Solving	BEBPM304	Katy Sharon
Budgeting & Financial Planning	BEBPM305	Rita d'Escoto, Chris Stanich
Leading for Equity & Inclusion	BEBPM306	Brook C. Bidipo-Memba, Amy Scharf
Do What Matters Most	BEBPM307	Kathy Mendonca
Influential Storytelling for Organizational Leaders	BEBPM308	Pierre Khawand
BPM Integrated Group Coaching	Group Coaching	Colin Gerker-Junsay

BPM: <u>Executive Coaching Program</u> - Cohort-based Program		
Introduction to BPM: Executive Coaching Program	Workshop	Angela Stopper, Eugene Whitlock, Colin Gerker-Junsay, Ying Kuah
Growing Your Coachability	BEBPM-ECP001 Workshop	Colin Gerker-Junsay, Ying Kuah
Introduction to Korn Ferry 360	BEBPM-ECP002 Workshop	Angela Stopper, Eugene Whitlock, Colin Gerker-Junsay, Ying Kuah
Korn Ferry 360 Rater Selection	Group Coaching	Colin Gerker-Junsay, Ying Kuah
Preparing for Feedback Theming and Development Planning	Group Coaching	Colin Gerker-Junsay, Ying Kuah
Korn Ferry 360 Group Report Analysis and Development Planning	BEBPM-ECP003 Workshop	Angela Stopper, Colin Gerker-Junsay, Pam Rich, Ying Kuah
Maximizing 1:1 Coaching Conversations - BetterUp Launch	Group Coaching	Colin Gerker-Junsay, Ying Kuah
Reflections Point - One Month of Coaching	Group Coaching	Colin Gerker-Junsay, Ying Kuah
BetterUp Insights Report	Group Coaching	Colin Gerker-Junsay, Ying Kuah
Reflection Point - Four Months of Coaching	Group Coaching	Colin Gerker-Junsay, Ying Kuah
Preparing to Complete the Program	Group Coaching	Colin Gerker-Junsay, Ying Kuah
BetterUp Impact Report and Closing Event	Group Coaching	Angela Stopper, Eugene Whitlock, Colin Gerker-Junsay, Ying Kuah

Grow Your Career Workshops

Program Manager/Trainer/Coach - Lisa Rykert

Career Development Offerings		
Achieve Together: Preparing Yourself for the Conversation with Your Supervisor/Manager	BECAR AT105	Colin Gerker-Junsay, Lisa Rykert
10+ Resources to 10X Your Career Planning	BECAR 100	Elizabeth Storer, Lisa Rykert
Cover Letter Writing Practice Lab	BECAR PL101	Linda Lundberg, Lisa Rykert
Resume Writing Practice Lab	BECAR PL102	Linda Lundberg, Lisa Rykert
Projecting Confidence and Making an Impact	BECAR 106	Angela Stopper
Interests in Life and Work	BECAR 150	Chris McLean
Work Style and Your Career	BECAR 151	Kate Zuby
Engaging Your Competencies and Values to Build Your Best Future	BECAR 152	Angela Stopper
The Skills You Bring	BECAR 153	Kate Zuby
Get in Gear for a Breakthrough Year in Your Career!	BECAR 181	Linda Lundberg, Lisa Rykert
Design Thinking: Tools to Build Your Career	BECAR 251	Rebecca Andersen, Kandis Rodgers
Design Your Journey - Odyssey Planning for Career Development	BECAR 253	Rebecca Andersen, Kandis Rodgers
Effective Resume Writing	BECAR 350	Linda Lundberg, Lisa Rykert
Informational Interviewing	BECAR 351	Linda Lundberg, Lisa Rykert
Interviewing for the Job	BECAR 352	Linda Lundberg, Lisa Rykert
LinkedIn Basics	BECAR 354	Mason Perez
LinkedIn II: Maximize Your Online Professional Presence	BECAR 356	Tara Hertstein

NOW Encore Series

Building on the success of the NOW Conference, we are pleased to extend conference offerings through the NOW Encore Series, a collection of post-conference career development workshops aimed at unlocking our staff's potential. These live, virtual sessions feature diverse internal and external subject matter experts, ensuring a rich and engaging learning experience. Most of these workshops are recorded and made available on the [NOW Conference Archives](#) website for broader viewing access. Our Fall 2025 offerings include:

Owning Your Growth in the Age of A	BECAR NE601	David Brown-Dawson
Level Up Your Management: Supporting First-Gen Professionals	BECAR NE602	Cassy Huang, Jose Rivas
AI Is Changing Work—Are You Ready?	BECAR NE603	Myra Roldan
Psychological Safety (PS101)	BECAR NE604	Taneya Neal
Connect, then Lead	BECAR NE605	Carolyn Godfrey
Communicate with Impact: Leadership through Conversation	BECAR NE606	Nicole Lenzen
What Do You Want More Of In Your Career & Life?	BECAR NE607	Claudia Fulga
Lead From Where You Are	BECAR NE608	Kristi Culpepper, Dennis McIver
Creating a Purposeful Next Act: Aligning Our Work with Our Deeper Purpose	BECAR NE609	Heidi Rosenfelder
<u>Career Coaching</u>		
Career Coaching - 1:1, 45-minute sessions to support staff around career-related goals, challenges, and opportunities. Private appointments can be scheduled on this calendar .		Lisa Rykert, Linda Lundberg, Elizabeth Storer, Ying Kuah

Research Administration Professional Development Program (RAPDP)

Program Manager - Ying Kuah

Foundational		
Research Administration Overview	BERDP011	eCourse
Research in a Regulatory Environment	BERDP012	eCourse
Research Administration Overview and Research in a Regulatory Environment	BERDP013	Sanchita Pal, Thomas Parsons
Customer Service for the RA	BERDP007	Angela Brito Baldwin, Amy Frithsen
Budget Development Basics	BERDP014	eCourse
Budget Development	BERDP003	David Wolf, Marina Ilitskaya, John Zurik
Fund Accounting	BERDP016	eCourse
Intermediate		
Proposal Development	BERDP101	Kristin Stangl, Taylor Kaserman
Research Conflict of Interest	BERDP311	eCourse
Federal Cost Policy & Compliance	BERDP206	Deborah Howard, Noam Pines
Non-Federal Cost Policy & Compliance	BERDP207	Deborah Howard, Kate Lewis, Hannah Holloway
HR for the RA Basics	BERDP015	eCourse
HR for the RA	BERDP309	Angela Brito Baldwin, Eboni Wilson
New Awards Basics	BERDP019	eCourse

New Awards	BERDP202	Angela Brito Baldwin, Katie Hudson
Fund Management Basics	BERDP020	eCourse
Fund Management	BERDP203	Andrew Scarbeary-Simmons, Melodee Li, Monica Naputi
Closeouts Basics	BERDP018	eCourse
Closeouts	BERDP204	Sarah Runyon, Stephanie Carroll
Outgoing Subawards	BERDP225	eCourse
Specialty		
Cost Share Basics	BERDP017	eCourse
Cost Share	BERDP210	Sarah Runyon, Hannah Holloway
Introduction to Developing Large & Complex Proposals	BERDP021	eCourse
Developing Large & Complex Proposals	BERDP103	Erica Whitney, Melanie Register, Raymond Fong, Ryan Y Phan, Taylor Kaserman
Animal Subjects Research	BERDP304	eCourse
Human Subjects Research	BERDP308	eCourse
Industry Membership Agreements	BERDP310	eCourse
Supplier Diversity Overview	BERDP312	eCourse
Fellowships & Training Grants	BERDP321	eCourse

Skills for Success: Unlocking Your UC Berkeley Career

Program Manager - Elizabeth Storer

Skills for Success: Unlocking Your UC Berkeley Career - Cohort-based Program		
Introductory eCourse Module	BECAR600	Elizabeth Storer
eCourse Module + Experiential Learning #1	BECAR601	Elizabeth Storer
Maximizing Productivity Skills: Time Management, Decision Making, and Prioritization Strategies	In-person Class Session	Elizabeth Storer, Campus Expert Guest Speaker
eCourse Module + Experiential Learning #2	BECAR602	Elizabeth Storer
Enhancing Verbal Communication Skills: Giving Impactful Presentations and Organizing Information Effectively	In-person Class Session	Elizabeth Storer, Campus Expert Guest Speaker
eCourse Module + Experiential Learning #3	BECAR603	Elizabeth Storer
Impactful Written Communication Skills: Using Writing to Boost Critical Thinking and Program Solving	In-person Class Session	Elizabeth Storer, Campus Expert Guest Speaker
eCourse Module + Experiential Learning #4	BECAR604	Elizabeth Storer
Leveraging Strategic Leadership Skills: Planning, Alignment, and Stewardship of University Resources	In-person Class Session	Elizabeth Storer, Campus Expert Guest Speaker
eCourse Module + Experiential Learning #5	BECAR605	Elizabeth Storer
Achieving Project Success Skills: Project Management and Ensuring Accountability	In-person Class Session	Elizabeth Storer, Campus Expert Guest Speaker
Program Wrap-up and Graduation	In-person Class Session	Elizabeth Storer

Technology & Systems Training

Program Manager/Trainer - Keith Samsell

Database		
Introduction to Databases	BETEC204	Keith Samsell
Microsoft Access Action Queries	BETEC037	Keith Samsell
Microsoft Access Form and Report Design	BETEC021	Keith Samsell
Microsoft Access Macro Design	BETEC042	Keith Samsell
Microsoft Access Query Design	BETEC018	Keith Samsell
Microsoft Access Table Design	BETEC016	Keith Samsell
Relational Database Fundamentals	BETEC017	Keith Samsell
SQL Fundamentals	BETEC209	Keith Samsell
Documentation and Desktop Publishing		
Google Docs Fundamentals	BETEC101	Keith Samsell
Microsoft Visio Data Visualization	BETEC207	Keith Samsell
Microsoft Visio Fundamentals	BETEC014	Keith Samsell
Microsoft Word Advanced Visual Design	BETEC015	Keith Samsell
Microsoft Word Desktop Publishing and Illustration	BETEC040	Keith Samsell
Microsoft Word Mail Merge Automation	BETEC034	Keith Samsell
Power Integrations		
Microsoft DAX Calculations for Excel and Power BI	BETEC308	Keith Samsell
Microsoft Power BI Charts and Data Visualization	BETEC307	Keith Samsell
Microsoft Power Map for Excel	BETEC309	Keith Samsell
Microsoft Power Pivot Data Modeling	BETEC306	Keith Samsell

Microsoft Power Query Calculations and Analytics	BETEC302	Keith Samsell
Microsoft Power Query Data Import Automation	BETEC301	Keith Samsell
Microsoft Power Query Excel Data Structures	BETEC305	Keith Samsell
Microsoft Power Query Interactive Report Design	BETEC304	Keith Samsell
Microsoft Power Query Multi-Query Relationships	BETEC303	Keith Samsell
Microsoft PowerToys for Windows	BETEC310	Keith Samsell
Presentations and Multimedia		
Google Slides Fundamentals	BETEC105	Keith Samsell
Microsoft PowerPoint Advanced Visual Design	BETEC039	Keith Samsell
Microsoft PowerPoint Fundamentals	BETEC029	Keith Samsell
Project Management and Productivity		
Box Collaboration for Microsoft Apps	BETEC211	Keith Samsell
Microsoft Apps Content Linking and Integrations	BETEC041	Keith Samsell
Microsoft Apps Macros and Automation	BETEC205	Keith Samsell
Microsoft Project Fundamentals	BETEC001	Keith Samsell
Microsoft Project Metrics and Performance Indicators	BETEC201	Keith Samsell
Microsoft Project Multi-Project Dashboards	BETEC043	Keith Samsell
Special Topics	BETEC200	Keith Samsell
Trello Fundamentals	BETEC202	Keith Samsell
Trello Power-Ups and Automation	BETEC210	Keith Samsell
Spreadsheets		
Google Sheets Charts	BETEC104	Keith Samsell
Google Sheets Data Tables	BETEC108	Keith Samsell

Google Sheets Formulas and Functions	BETEC102	Keith Samsell
Google Sheets Pivot Tables	BETEC103	Keith Samsell
Microsoft Excel Charts	BETEC022	Keith Samsell
Microsoft Excel Data Validation and Security	BETEC031	Keith Samsell
Microsoft Excel Database and Lookup Functions	BETEC024	Keith Samsell
Microsoft Excel Formulas and Functions	BETEC007	Keith Samsell
Microsoft Excel Linking and Referencing Calculations	BETEC033	Keith Samsell
Microsoft Excel Nested and Logical Functions	BETEC023	Keith Samsell
Microsoft Excel PivotTables and PivotCharts	BETEC009	Keith Samsell
Microsoft Excel Scenario Analysis	BETEC032	Keith Samsell
Microsoft Excel VBA Function Programming	BETEC010	Keith Samsell
Survey Data Collection		
Google Forms Fundamentals	BETEC106	Keith Samsell
Google Forms Section Workflows and Quizzes	BETEC107	Keith Samsell
Qualtrics Fundamentals	BETEC206	Keith Samsell
Web Technologies		
Cascading Style Sheets Fundamentals	BETEC045	Keith Samsell
HTML Fundamentals	BETEC035	Keith Samsell
Microsoft SharePoint Fundamentals	BETEC203	Keith Samsell

Other People & Organization Development Programs

[Achieve Together](#)

[Focused 90](#)

[Foundational Skills Training](#)

[Grow on the Go Library](#)

[Mindfulness Meditation](#)

[Next Opportunity at Work Conference \(NOW\)](#)

[Sponsored Tuition](#)

[Staff Fellowship Program](#)

[Transferable Skills Library](#)

[UC Women's Initiative](#)

[UC Berkeley Women's Initiative](#)

[UC Experience Conversations](#)

[UC Peer Connection Community](#)

[Wisdom Café](#)

People & Organization Development Partners

List of Instructors

Matthew Alvarez, BPM
Silvia Ahn, UCB WI
Amii Barnard-Bahn, UCB WI
David Brown-Dawson, Career Dev
Kristi Culpepper, Career Dev
Tess Brigham, Custom
Angela Brito Baldwin, RAPDP
Brook C. Bidipo-Memba, BPM
Monica Brown-Buccellato, BPM
Linda Burton, UCB WI
Cedar Carlton, BPM
Stephanie Carroll, RAPDP
Serena Chen, UCB WI
Carrie Ann Colton, BPM
Jan Crosbie-Taylor, BPM
Rita d'Escoto, BPM
Scott Dinkelspiel, BPM
Dara Efron, BPM
Raymond Fong, RAPDP
Amy Frithsen, RAPDP
Claudia Fulga, Career Dev
Lisa Garcia Bedolla, UCB WI
Sarah Gaugler, RAPDP
Colin Gerker-Junsay, BPM, Career Dev
Shirley Giraldo, BPM
Carolyn Godfrey, Career Dev
Ann Harrison, UCB WI
Ramona Harvey, Custom
Tara Hertstein, BPM
Hannah Holloway, RAPDP
Deborah Howard, RAPDP
Julie Hooper, UCB WI
Cassy Huang, Career Dev
Katie Hudson, RAPDP
Marina Illitskaya, RAPDP
Jurrisha Johnson, BPM
Sharon Johnson, BPM
Taylor Kaserman, RAPDP
Pierre Khawand (vendor), BPM
Ying Kuah, BPM
Nicole Lenzen, Career Dev
Kate Lewis, RAPDP

Melodee Li, RAPDP
Linda Lundberg, Career Dev
Kevin Mack, BPM
Chris McLean, Career Dev
Kathy Mendonca, BPM
Michele Molitor, UCB WI
Monica Naputi, RAPDP
Marc Ovalle Marihart, BPM
Dennis McIver, Career Dev
Taneya Neal, Career Dev
Sanchita Pal, RAPDP
Thomas Parsons, RAPDP
Claudia Peredes, UCB WI (Coro)
Mason Perez, Career Dev
Ryan Phan, RAPDP
Noam Pines, RAPDP
Melanie Register, RAPDP
Pamela Rich, BPM
Jose Rivas, Career Dev
Almira Roldan, Career Dev
Heidi Rosenfelder, Career Dev
Lisa Rykert, BPM, Career Dev
Laura Pulido, BPM
Keith Samsell, Technology & Systems
Andrew Scarbeary-Simmons, RAPDP
Gabe Schmidt, BPM
Amy Scharf, BPM
Tesha Sengupta-Irving, UCB WI
Deepak Sharma, BPM
Katy Sharon (vendor), BPM
Kris Stangl, RAPDP
Chris Stanich, BPM
Angela Stopper, BPM, Career Dev
Elizabeth Storer, BPM, Career Dev
Grace Turkis, UCB WI (Coro)
Belle Walker, Custom
Eugene Whitlock, BPM
Erica Whitney, RAPDP
Eboni Wilson, RAPDP
David Wolf, RAPDP
Kate Zuby, Career Dev
John Zurik, RAPD

People & Organization Development Partners (cont'd)

Departments

Advising Strategy + Training
Be Well at Work
Berkeley Regional Services
Berkeley Research Development Office
Contracts and Grants Accounting
Controllers's Office
Division of Equity and Inclusion
Financial Planning & Analysis
Financial Systems
Industry Alliance Office
Office of Faculty Equity & Welfare

People & Culture, Benefits
People & Culture, Compensation
People & Culture, Central Services
People & Culture, Staff Engagement & Belonging
People & Culture, Employee & Labor Relations
People & Culture, Talent Acquisition
People & Culture, UC Path Operations
Sponsored Projects Office

Vendors

Barnes & Conti
Becoming Your Best Global Leadership
BetterUp
Envisia Learning
Everything DiSC
Imperative

Korn Ferry
Leader Success
The Ken Blanchard Companies
The Myers-Briggs Company
People-OnTheGo