

COMM 2555 Interactive Digital Communication

LAB 5

The goal of this lab is to practice styling the box model.

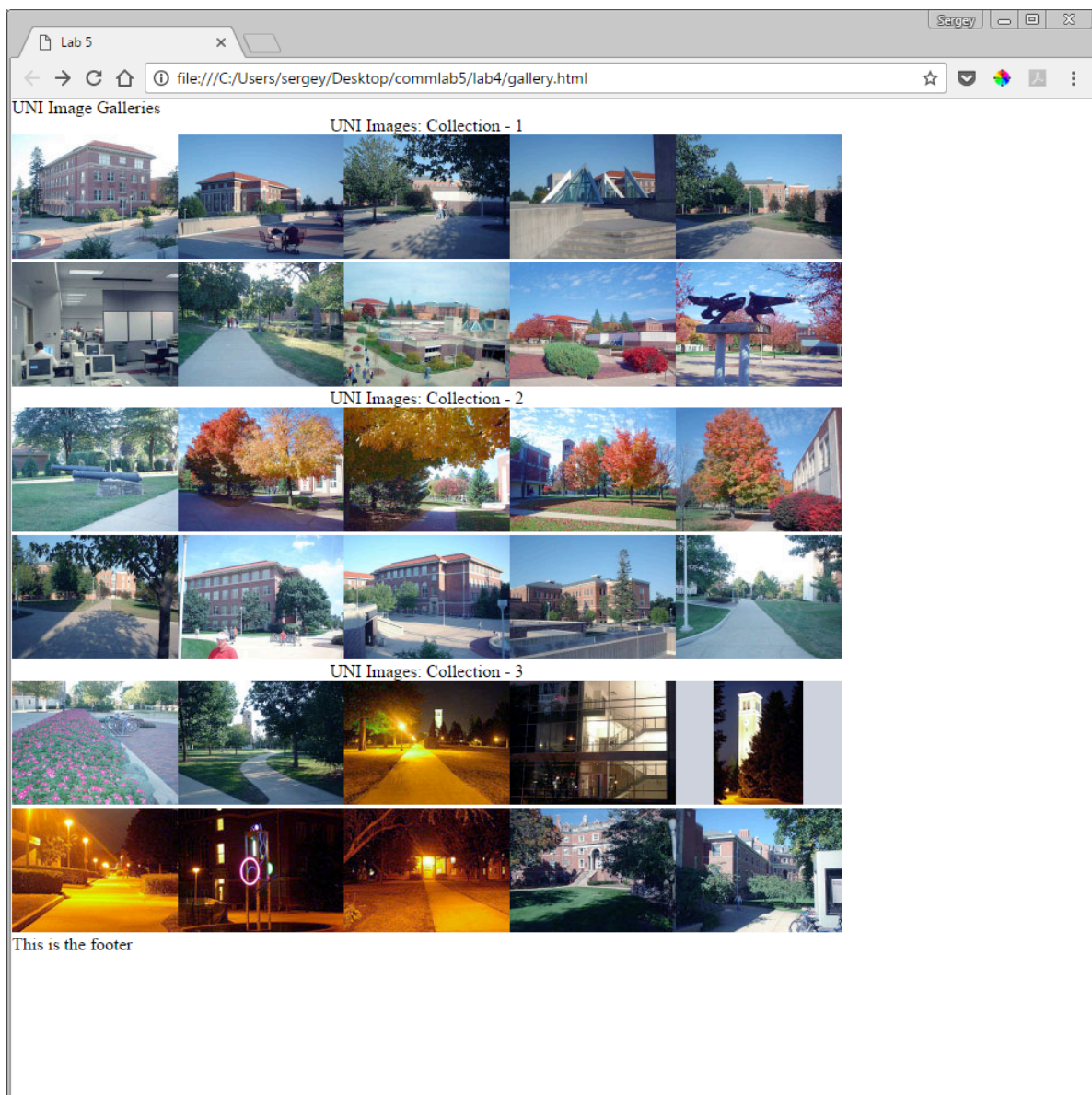
Make sure you log on to YOUR ACCOUNT.

Step 1: Setup

1.1. Create a new folder on the desktop, call it lab5_[your user name]. So, if your username were batman, you'd call your folder lab5_batman . This is the folder where you will be working today.

1.2. Make sure your folder displays file name extensions.

1.3. Download the lab5 folder, which contains a gallery.html file, a reset.css. Create a nearly blank gallery.css. View gallery.html in a browser:



Step 2: Style your gallery.

The idea of this lab is to let you experiment with styling margins, padding, borders, and backgrounds. You may use any style combinations you like. Your goal is to achieve the screenshot below, or something similar (you may use other length values and other colors). Following are a few suggestions:

- add a background to the body

Try a color:

```
1 ▼ body {  
2   background-color: #c99e1c;  
3 }  
4
```

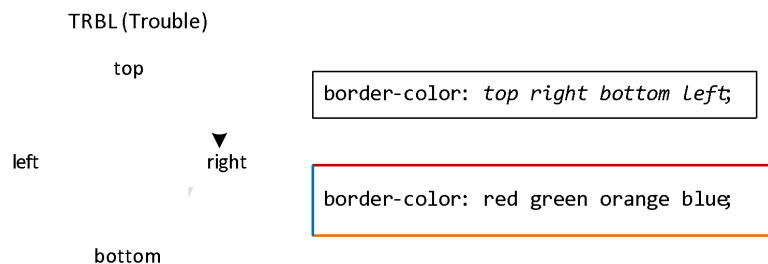
Try a textured background image (see bg.jpg) in the your images folder:

```
1 ▼ body {  
2   background-image: url("images/bg.jpg");  
3   background-repeat: repeat;  
4 }
```

- use the text-align property to align the contents of an element (for example, the contents of the footer or the top heading)
- change the font-size and font-weight of headings
- you can set the margin for **all the 4 sides** (margin: value) or one side at a time (margin-left: value)

margin: 30px 5px 15px 200px;

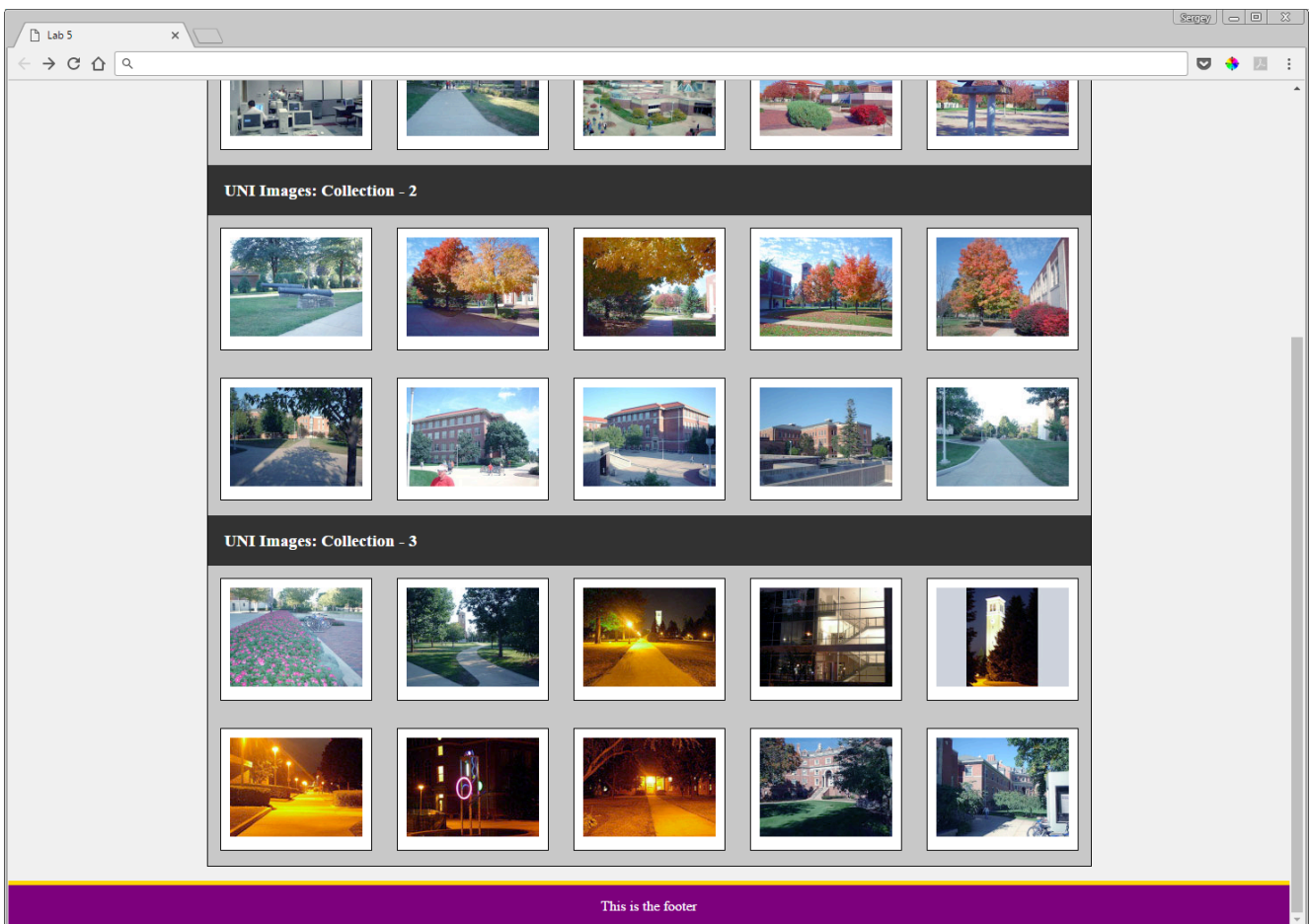
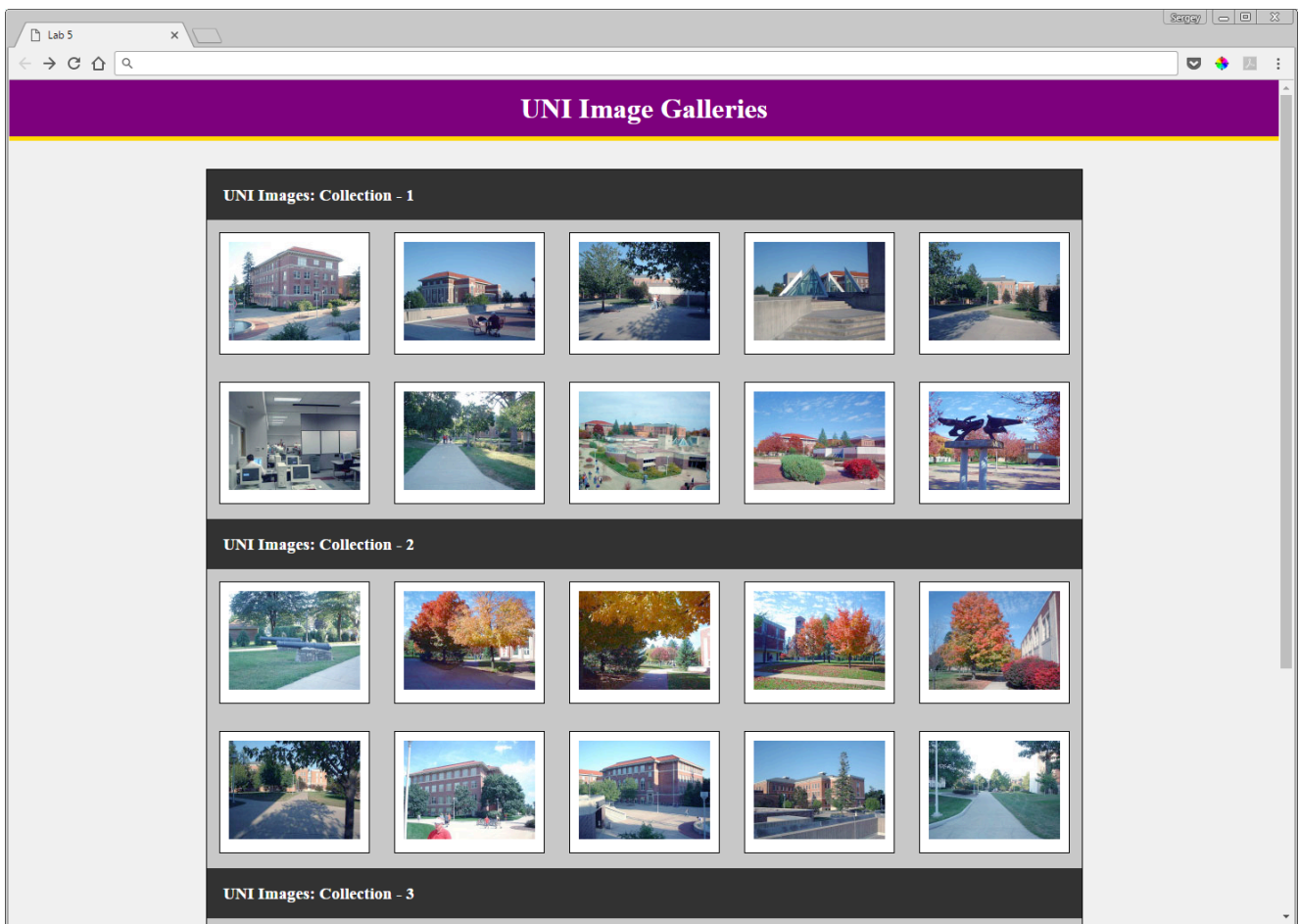
- same goes for padding and borders: all sides or one at a time (margin-bottom, border-right, etc...)



- to set a border, you need to specify the borders width, style and color. For example: border: 10px, solid red.
- to center-align an element (NOT its content), you can set its margin to auto (margin: auto)

If you want to add more styling to specific cells in the table, feel free to alter the HTML and add classes.

Here's what your final result should look like (more or less):



Make sure your code validates:

Go to this web page https://jigsaw.w3.org/css-validator/#validate_by_upload . Upload your **style.css** file and check it for errors. If you see any errors, check your code: you must have made a typo or missed a character. Repeat until there are no errors.

Final step: Submit your lab

Submit your **style.css** files to eLearning (course content > labs > lab 5).