



SOCIAL IMPACT

CAREER TOOLS

A social impact career involves work where one of the goals is to contribute to the social good and address societal or environmental challenges. Social Impact careers focus on making a positive difference in the lives of people, communities, and the planet.

There are many different types of employers that contribute to positive social impact:

- Nonprofits (small to very large)
- Government (local to national)
- Social purpose business
- Impact investing
- Technology for social good
- B Corp certified business
- Impact and/or sustainability initiatives @ for-profit companies
- Foundations, donors or other philanthropic organizations
- Healthcare organizations
- Education organizations

The SB Career Center can help you with your Social Impact career goals:

1. Optimize your **resume, LinkedIn profile and cover letters** for your personal values and goals
2. Join the [Career Mentor Program](#)
3. Create a **Job & internship search** strategy
4. Develop a **Networking** Strategy
5. Preparing for a job or internship **Interview** /Conduct a **Mock interview**
6. Provide referrals to relevant campus-wide and community-based **resources and organizations**
7. Help identify and **connect with PSU alumni**

Social Impact Academic Options at PSU School of Business:

- Explore Social Impact courses: [Registration](#)
- [Map the System](#) Course & Competition
- [Social Innovation Certificate](#)
- [Social Innovation Field Study](#)



Selection of Social Impact Activities, Resources & Organizations:

Impact Activities & Organizations at the School of Business and PSU:

- [Net Impact Club](#) is designed to support student growth as sustainability stewards and professionals. The club hosts events, sponsors the B Impact program and offers leadership opportunities.
- [B Impact](#) offers opportunities to operationalize sustainability within local businesses while gaining valuable hands-on consulting experience.
- [Impact Ventures](#) is a student-led impact investing fund managed by PSU MBA and MSF students in collaboration with investment partners.
- [Cleantech Challenge](#) is a showcase of the innovative spirit of students from across disciplines coming together to solve some of the most significant issues our communities face today.
- [Everyday Entrepreneur Program](#) is a 10-week Program & Pitch Competition designed to give PSU students the tools and inspiration they need to start a business.
- [Student Community Engagement Center](#) is the hub for student civic engagement at PSU offering service opportunities, from single-day events to year-long service commitments.
- [Institute for Sustainable Solutions](#) unites people and organizations around foundational changes needed to build a sustainable and just region.
- [Living Lab PSU](#) engages students and faculty in campus-based applied sustainability projects in partnership with operational staff.

Off-Campus Impact Initiatives & Organizations:

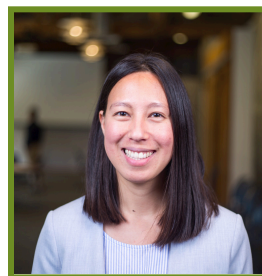
- [B Local PDX](#) is a group of Certified B Corporations from Oregon & Southwest Washington working to create boundless opportunities for B Corps in the region.
- [Better Portland](#) connects businesses, non-profits, and organizations into a like-spirited collective with events, content, and a business-meets-social networking culture.
- [Climate Curious](#) is a network of thought leaders, researchers, entrepreneurs, and people passionate about sustainability to meet, hang out, and learn.
- [Global PDX](#) unites people, organizations, and businesses that share a common goal: world betterment.
- [Impact PDX](#) is a diverse collection of professionals working across the sustainability field and based in or connected by Portland, OR.
- [Mercy Corps](#) is a global team of humanitarians working together on the front lines of today's biggest crises to create a future of possibility, where everyone can prosper.
- [MicroMentor](#) brings together entrepreneurs and mentors from around the globe, letting business owners access a global community of experts, coaches & business people.
- [OEN](#) builds and strengthens Oregon and Southwest Washington's early-stage entrepreneurs through the provision of education, guidance, connections, and financial opportunities.
- [Prosper Portland](#) is the economic and urban development agency for the city of Portland. They focus on building an equitable economy by supporting small businesses, improving access to workforce training, and creating jobs for Portland residents.
- [YNPN Portland](#) supports the development of young professionals to strengthen their role in a viable, inclusive, and collaborative nonprofit sector.

Select Social Impact Alumni



[Jade Rogren](#)

Director, Global ESG
Universal Music Group



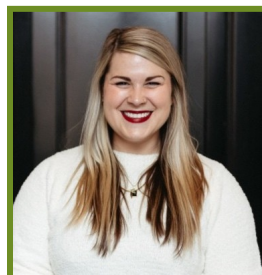
[Kaitlyn Rich](#)

Director, Community Capital
Ecotrust



[German Ochoa](#)

Founder
Woppa Alfajores



[Sarah Holdeman](#)

COO & Co-Founder
The Impact Collective



[Anita Ramachandran](#)

CEO
Micromentor



[Eduardo Ovejas](#)

Business Manager
Forandra Capital

Updated 4/17/26