

IUBAT College of Nursing Structure

Projected program size: 30 students in each year (assume initial enrolment is slightly higher due to attrition). Limiting factor is hospital placement and clinical supervision.

Faculty positions

Chair Health Sciences (Teaching load = 1 courses in 3 semesters)

Coordinator, College of Nursing (Teaching load = 2/3)

Senior Instructor 1 – Medical-surgical nursing; Senior Instructor 2 – Maternal-child nursing; Senior Instructor 3 – Mental health and community nursing

- Senior Instructors (SI) will coordinate subject areas as indicated
- SI will work with Junior Instructors (JI) and visiting faculty in classroom and practice settings
- Ideally, SI will have joint appointments in teaching hospital sites

Junior Instructor 1; Junior Instructor 2; Junior Instructor 3

Teaching Assistants (Total required – to be decided)

Laboratory Assistant 1

Visiting Faculty (No assigned courses; will provide student enrichment and faculty development)

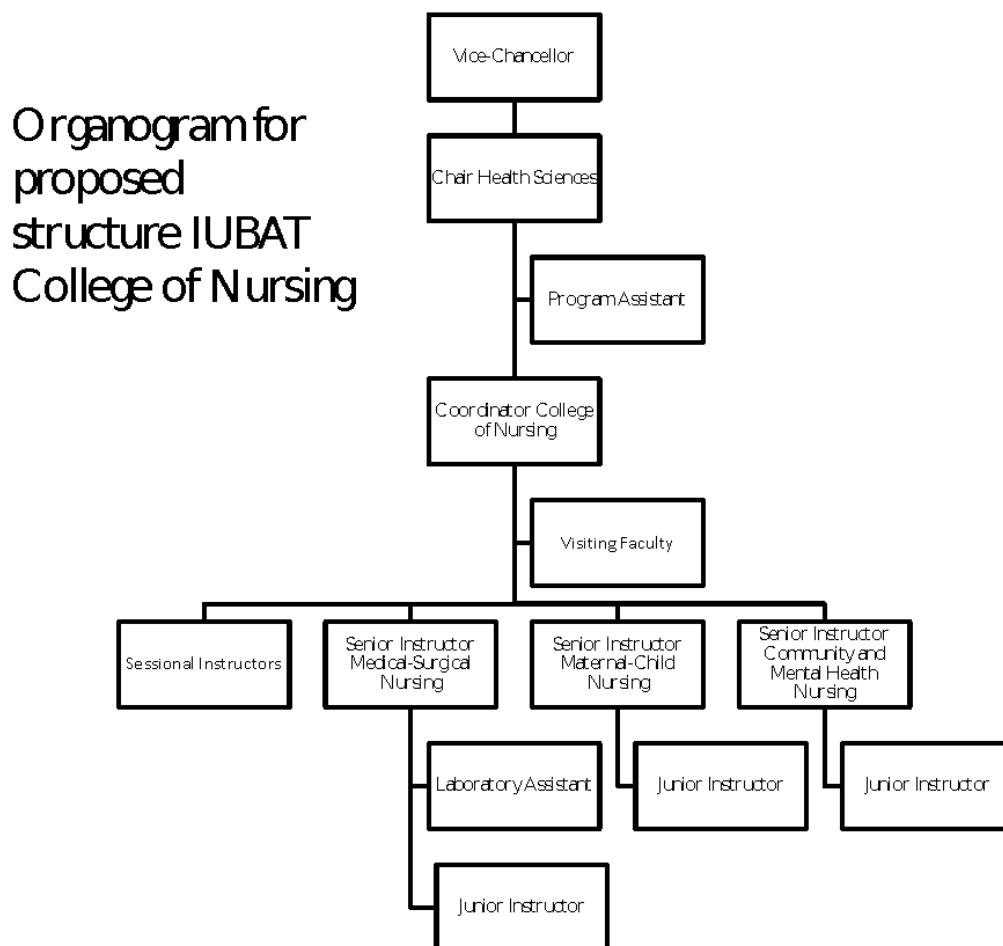


Illustration of teaching schedule under proposed structure

SPRING SEMESTER		Positions	Hours/ week	Notes
NUR 219	Medical Surgical Nursing – I	SI1	8	Assume 3 credit course = 8 hours staff time per week
NUR 220	Practicum - Medical Surgical Nursing - I	SI1 + JI1	16 X2	Assume lab course = 8 hours staff time per week
NUR 333	Maternal and Child Health Nursing - I	SI2	8	
NUR 334	Practicum - MCH - I	SI2 + JI2	16 X2	SI= Senior Instructor
NUR 301	Nutrition	SI3	8	JI= Junior Instructor
NUR 401	Community Health Nursing - I	SI3	6	
NUR 402	Practicum - Community Health Nursing - I	SI3	8	
	Pharmacology	JI1	8	
	Semester total hours per instructor	SI1=24; SI2=24; SI3=22; JI1=24; JI2=16		
SUMMER SEMESTER				
NUR 114	Introduction to Nursing - I	Coordinator	8	
NUR 115	Laboratory – Introduction to Nursing - I	JI1	8	
NUR 221	Medical Surgical Nursing - II	SI1	8	
NUR 222	Laboratory - Medical Surgical Nursing - II	SI1 + JI1	16 X2	
NUR 335	Maternal and Child Health Nursing - II	SI2	8	
NUR 336	Practicum - MCH Nursing - II	SI2 + JI2	16 X2	
NUR 340	Mental Health Nursing - I	SI3	8	
NUR 341	Laboratory - Mental Health Nursing - I	SI3+JI3	16X2	
NUR 403	Community Health Nursing - II	SI3	8	
NUR 404	Practicum - Community Health Nursing - II	JI2	8	
NUR 423	Nursing Professional Orientation	JI3	8	
	Semester total hours per instructor	SI1=24; SI2=24; SI3=32; JI1=24; JI2=24; JI3=24		
FALL SEMESTER				
NUR 101	Concepts of Health and Illness	JI1	8	
NUR 116	Introduction to Nursing - II	JI3	8	
NUR 117	Laboratory – Introduction to Nursing - II	JI3	8	
NUR 223	Medical Surgical Nursing - III	SI1	8	
NUR 224	Practicum - Medical Surgical Nursing - III	SI1 + JI1	16 X2	
NUR 337	Maternal Nursing and Midwifery	SI2	8	
NUR 338	Practicum - MCH Nursing III	SI2 + JI2	16 X2	
NUR 342	Mental Health Nursing - II	SI3	8	
NUR 343	Practicum - Mental Health Nursing - II	SI3+JI3	16X2	
NUR 451	Research in Nursing	Chair	8	
NUR 415	Nursing Administration	Coordinator	8	
	Semester total hours per instructor	SI1=24; SI2=24; SI3=24; JI1=24; JI2=16; JI3=16		