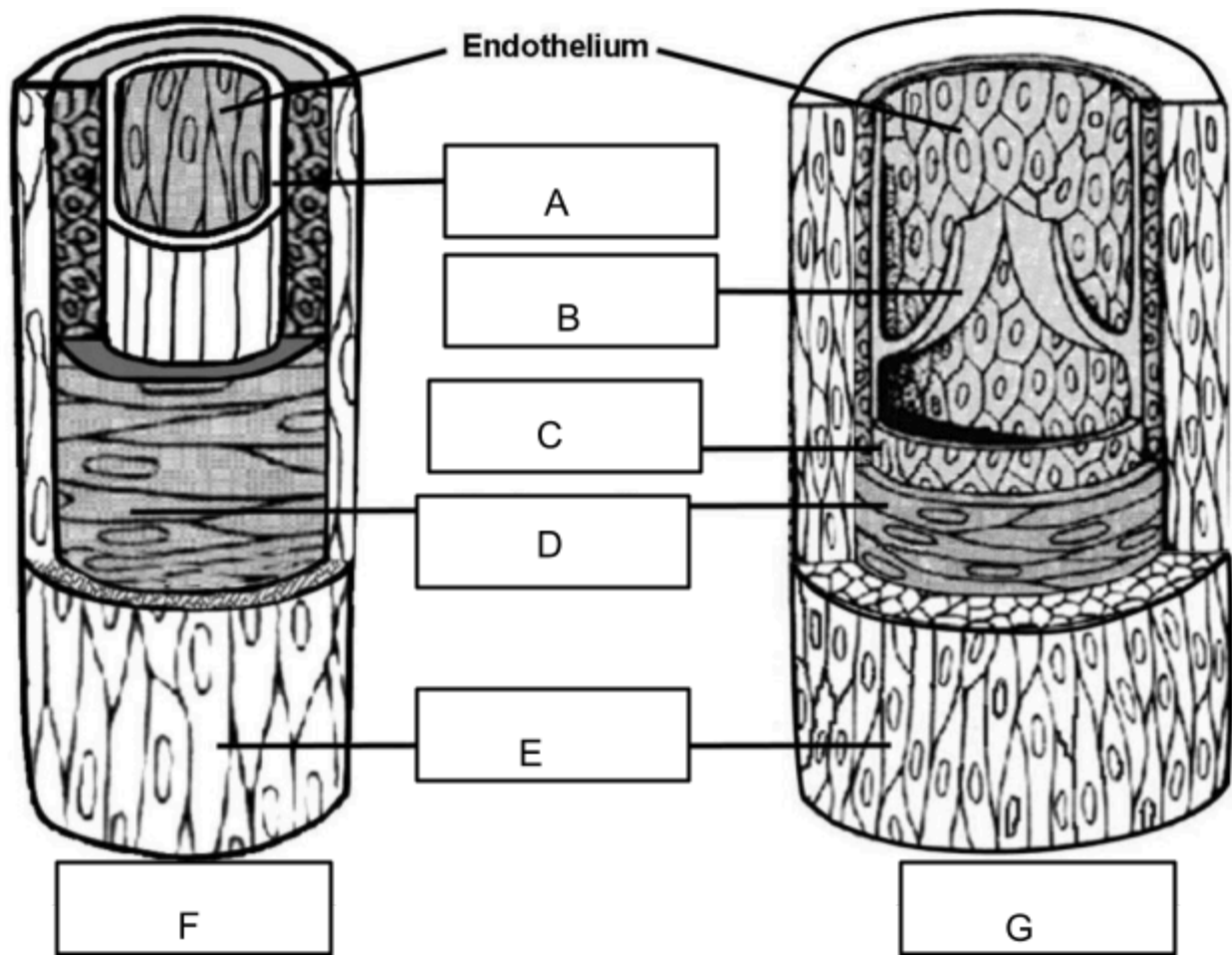


Name: _____

Date: _____



Word Bank and Key (one word used twice)

Artery	Tunica externa	Tunica Media
Tunica Interna	Vein	Valve

A: _____

B. _____

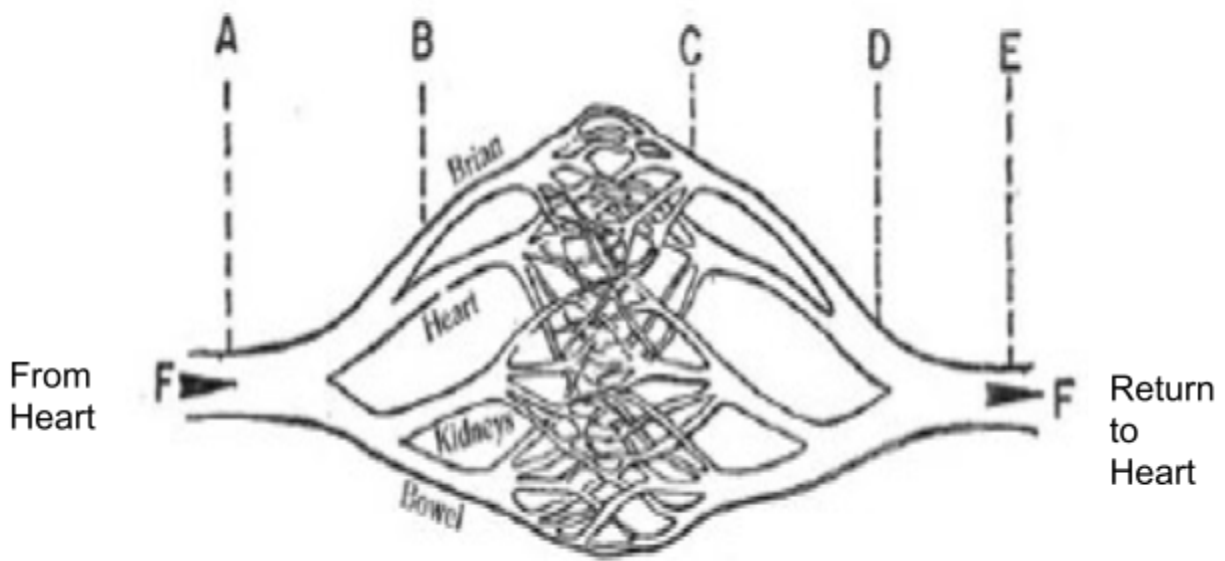
C _____

D. _____

E _____

F. _____

G. _____



A: _____

B. _____

C. _____

D. _____

E: _____

In the above diagram color the oxygen rich portions red, oxygen poor blue, and the capillaries purple

Looking at the diagrams and using your notes, Write a paragraph explaining what are 3 main **structural** differences between arteries and veins.

- **Be sure to use proper grammar and complete sentences**
- **Introduction sentence**
- **Conclusion sentence**