

Layered Selfie Project

How do self-portraits reflect your identity?

This project is all about you. Who you ARE, and who you WANT to be. How do you want to describe yourself?

Objective(s):

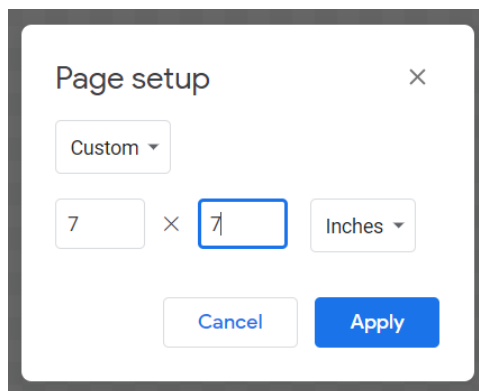
- Use photography as self-expression.
- Use Google draw to build a meaningful, personal and unified image out of at least 5 different pictures.
- Use different sizes, overlapping, opacity and layer blending modes to produce a unified image with a strong focal point and composition.

Start by....

Listing as many things as you can think of that describe you, your interests, your family, your friends, your heritage, your personality, etc.

Now...

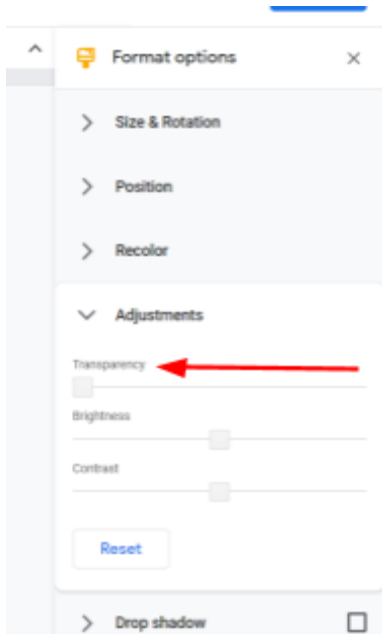
- Find or take ONE selfie. Find or take pictures of 4 things that represent you.
- Open Google Draw and set the image size to 7 by 7



- Use the explore or Insert Image>search the web to find a background for your layered selfie. This background should be relatively neutral (and remember you can change it later).
- Use <https://www.remove.bg/> OR any other background remover to remove the background of your selfie and any other pictures you are using.
- Place your images in your background and play with placement and transparency and color to place them on top of each other in a way that is pleasing to the eye.

Functions you will need:

Arrange > order: To move the order of the images from back to front and back again.



Format Options > Adjustments > Transparency - Only works if the picture is selected. To adjust the transparency of the picture. To create a true layered look you may want to add one picture at full transparency, place the next image on top of that and then add a second instance of the “original” and adjust the transparency so that you can see through that top image but not have a “total ghost”.

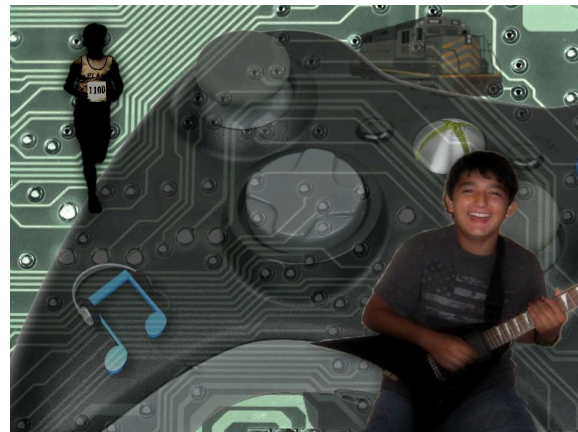
Play around with this until you are satisfied, and remember you can always undo if you do not like things.

To simulate the fading of the edges you may try Format Options > Adjustments > Drop shadow, and adjusting the settings there including the color, transparency, angle and blur radius.

Some of you may already know of a different way to do this using photo editing apps. It is OK to use those if you are familiar with them. Just remember that your final image must be able to be uploaded and opened as a jpeg from your

Google Drive.

Here are some examples of final work:



Layered Selfie Rubric

	3	2	1	0
Requirements <ul style="list-style-type: none"> - Background - Selfie (picture of student) - 4 images/symbols that represent you 	The final composition has a background, selfie and 4+ images that represent you	The final composition has a background, selfie and 3 images that represent you	The final composition has a background, selfie and 2 images that represent you	The final composition has a background, selfie and >2 images that represent you
Photo Quality	All photos chosen including background layer are clear, appropriately sized, background was erased from each selection leaving an excellent image with no visible problems.	Most selections appropriately sized, background was erased from layers leaving an image with very few visible problems.	Some selections may not be appropriately sized, background was erased from selections but images have rough or missing content.	Skills in creating smooth selections with no border showing or inappropriately sized or unclear photos not developed yet.
Layer Effects (opacity and adjustments)	Use of at least one of the effects correctly and it enhances photo.	Use of at least one of the effects correctly but does not enhance the photo.	Use of at least one of the effects but not completed correctly.	No attempt made.
On time/Followed directions	All parameters of the assignment have been followed and image is submitted by the due date to Google Classroom.	Most of the parameters of the assignment have been followed and image is submitted by the due date to Google classroom.	Some of the parameters of the assignment have been followed; some have not, and image is submitted by the due date to Google classroom.	Image submitted late.
Use of Class Time	Class time was used wisely. Much time and effort went into learning how to create a layered image.	Class time was used wisely. Student could have put in more time and effort.	Class time was not always used wisely. Student should have put in more time and effort.	Class time was not used wisely. Student did not put in additional effort.