

VP Shunt Brain WO Protocol

Scan notes:

Be sure to apply appropriate immobilization techniques for non-compliant patients and adequate padding around patient head in head coil to reduce motion.

Revised 08/23/2021

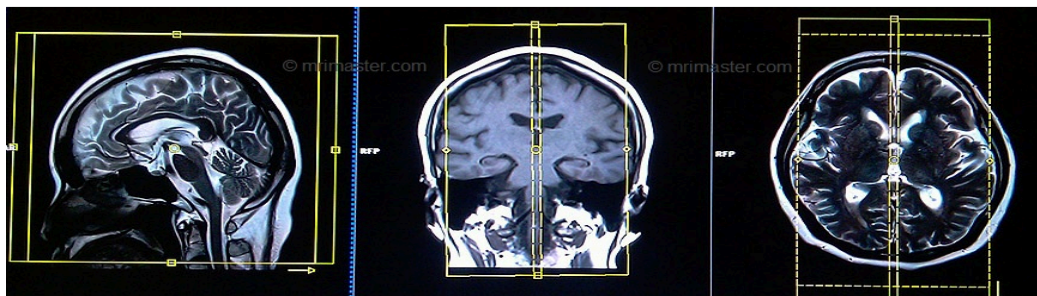
Charge as: Brain WO IV CONTRAST-VP Shunt Protocol

Scanner: 1.5T or 3T

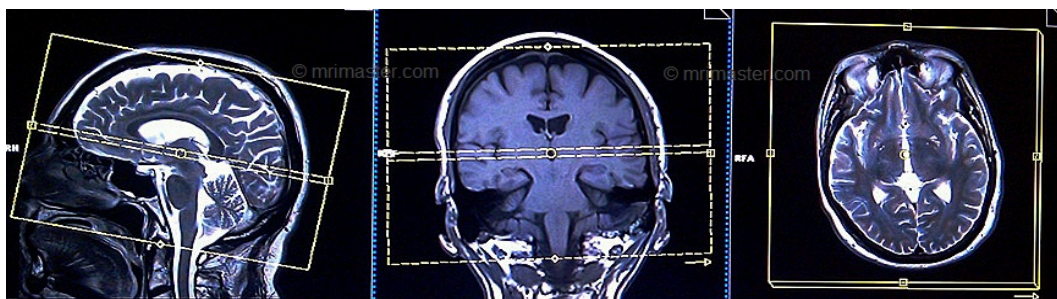
Coil: Head Coil/Flex Coil (flex coil may be needed if anterior head coil cannot clamp)

Plane	Weighting	Slice	Gap	FAT SAT	Scan Range
SAG	T2 HASTE	5mm	1.5mm	None	Whole brain/parallel to midline of brain.
AXIAL	T2 HASTE	5mm	1.5mm	None	Whole brain/parallel to AC/PC line
AXIAL	True FISP	5mm	1.5mm	None	Whole brain/parallel to AC/PC line
COR	True FISP	5mm	1.5mm	None	Whole brain/parallel to brain stem
COR	T2 HASTE	5mm	1.5mm	None	Whole brain/parallel to brain stem

SAG Image Planning:



AXIAL Image Planning:



COR Image Planning:

