

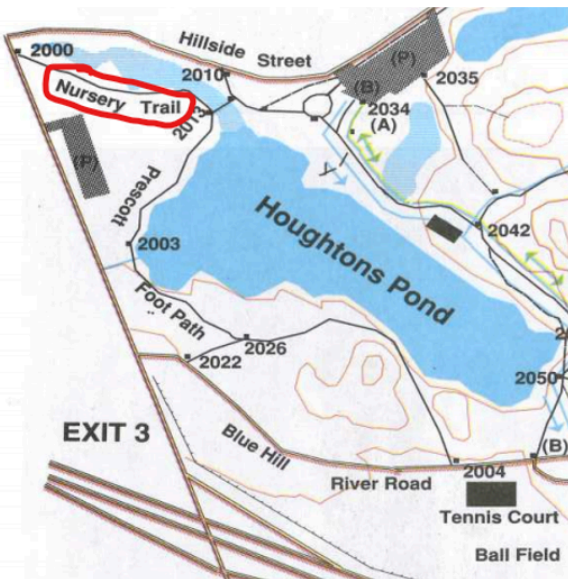
## 12 - Blue Hills History - Blueview Nursery



This is “Houghtons” (aka Hoosicwhisick) Pond and Hillside Street on a 1946 map.

It’s a bit hard to read, but if you look at the original you can see the circled trail is labelled “Nursery Path.”

Why would it be called *that*? 😊



Here is a slightly newer map. This is from the historic “Friends of the Blue Hills Maps”, which you can see at:

<https://friendsofthebluehills.org/wp/wp-content/uploads/trails/docs/fbhmaps.pdf>

Here it’s referred to as “Nursery Trail.”

Like all of the “Mill Streets” and such around our towns, while we may not remember why they were given those names, back when they were named, the name was obvious. So let’s step back in time at the Blue Hills and go look for our Nursery.

But first, let’s walk down Hillside Street to Route 138, and then drive 16 miles south. We’ll take Rt. 138 from the Blue Hills, and bear right on “Washington St.” when we get to the Ponkapoag Golf Course. Then we’ll follow Washington Street through Canton, to where it becomes both A) The town line between Sharon (on our right) and Stoughton (on our left) and also becomes

known as “Bay Road”. We’ll continue through to Easton, then one town further south, to Norton. Here, at 200 Bay Road, Norton, we’ll start our journey.

Today this is Blueview Nursery, in Norton, MA.

And this is their welcoming sign, showing a picture of “Big Blue Hill.” And their website logo at right.

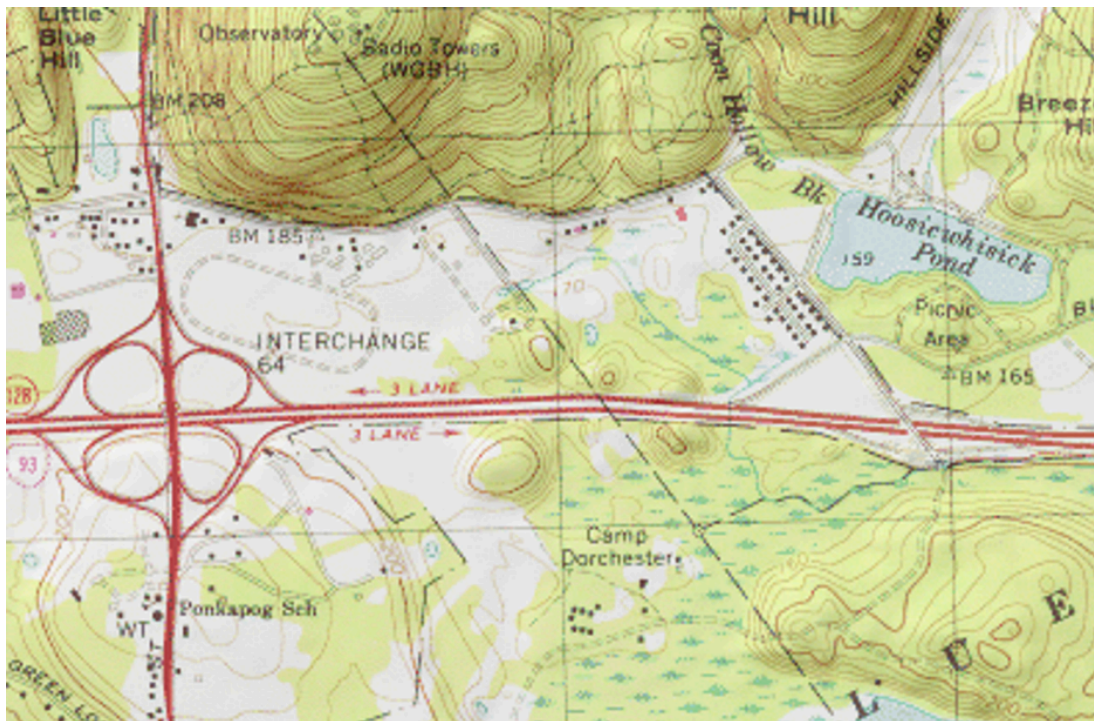


[i]



[ii]

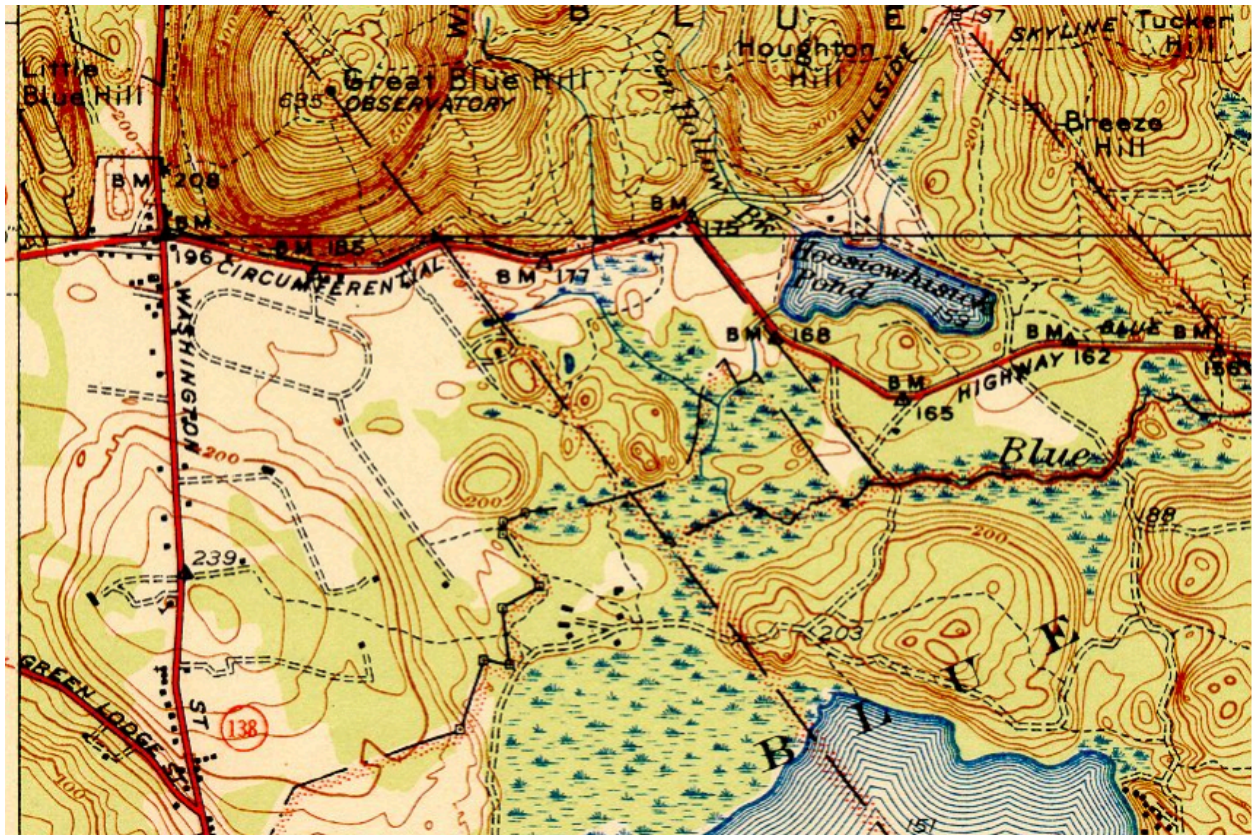
Blueview Nursery is a great place to buy plants and shrubs... but the view of “Big Blue Hill” is a *bit* restricted from Norton... But, as you might be guessing by now, this location isn’t where they started, and today we will take a look back at their history and it starts, no surprise, where our journey just started, on Route 138 at the base of “Big Blue Hill”, because “Blueview” refers of course to the view of “Big Blue Hill” from their *original* nursery location.



Current topo map [iii]



A well-known Canton business, the original Blueview Nurseries stood just west of the bridge which now carries Washington Street (Rt. 138) over Rt. 93/(AKA Rt. 128). Let's go back there and start in the beginning.



1936 US Topo Map:

The first owner of the nursery, which was originally known as Blueview Gardens, was James Taylor. He (irony number 1, as you'll discover below) was an employee of the State Highway Department, and he used to provide free plants for beautification projects when funds were tight. <sup>[iv]</sup>

One day two young boys showed up looking for work. They were Joe and Frank Cogliano. He hired them, and they went to work, part time during the school year, and full time during the summers. It turned out to be a fateful move for all, as eventually in 1949 when he was in his 90's Mr. Taylor sold out to Joe and Frank (and their mother Rose), and "Blueview Nursery" became theirs.



Pictured is the old Blue View Nursery on Washington Street (Route 138) in Canton. [v]



The view from the Cogliano home is shown in a 1954 view looking toward Washington Street [vi]

Unfortunately, in 1956 'New' Rt 128 was being built, and their land was needed for the interchange of Rt. 138 and the new Rt. 128 highway.

When forced to relocate they were able to purchase a 10-acre portion of a lot which had been bisected by the new Rt. 128. So, they moved just down Royall Street. Unfortunately, while the



state took their land, and compensated them for it, the State was unwilling to compensate them for their nursery stock. This led to a lawsuit, which went all the way to the state Supreme Court but eventually the Coglianos won, and the state was forced to compensate them for their loss of the nursery stock. <sup>[vii]</sup>



Joe and Frank Cogliano at the Royall Street site

Blueview continued in operation on Royall Street for many years, and I can remember seeing their sign from Rt. 95 when I made that cloverleaf onto Rt 128 north. Eventually, in 1998, they sold that land and moved to the 35-acre site in Norton, which provides much more room for nursery stock. But there is one last piece to the story and it's where the second irony comes in.

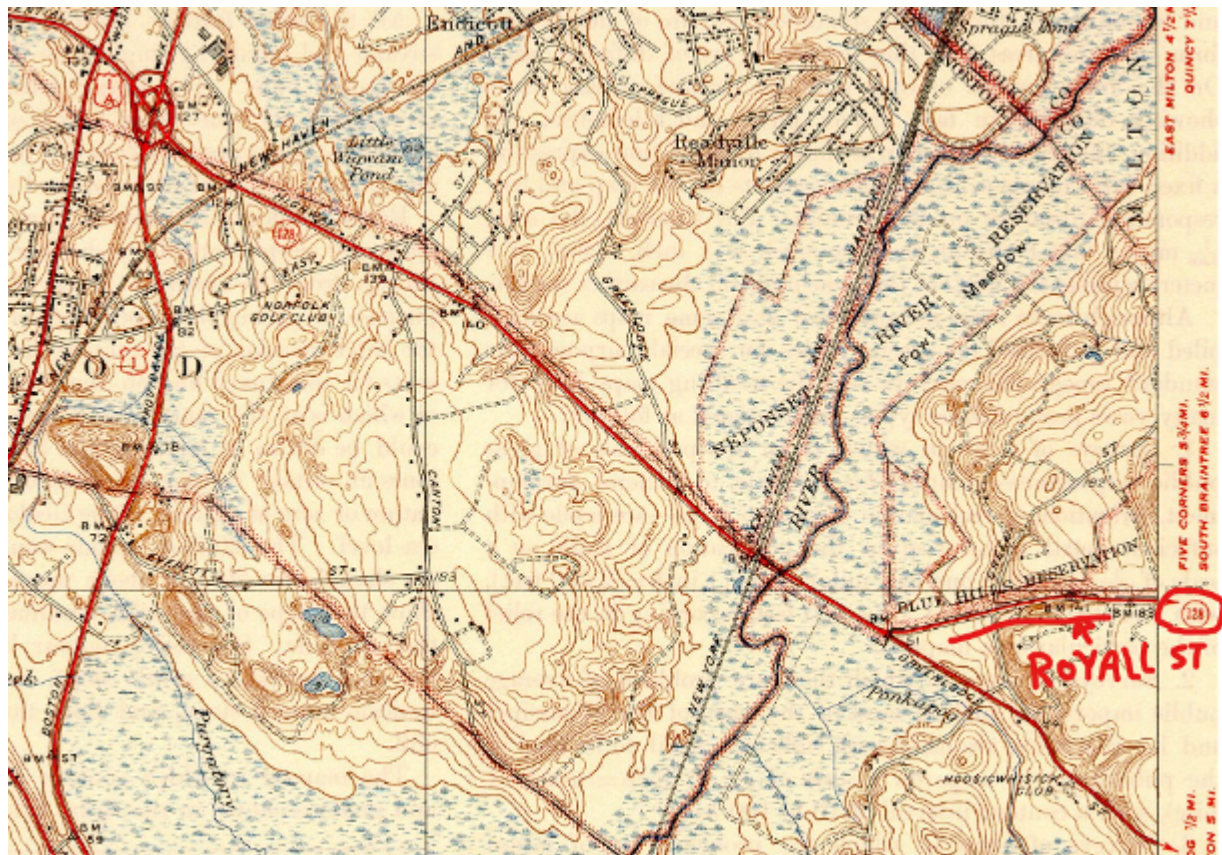
Joe Cogliano had a son John, who worked at the nursery but eventually went to work for the Commonwealth. On May 2, 2005 then Governor Mitt Romney named John Cogliano as his new Commissioner of the Massachusetts Highway Department. <sup>[viii]</sup> As such John then took charge of the very department his father and uncle had had to sue to receive compensation for their nursery stock. John credited growing up next door to Rt. 128 as the reason for his interest in highways. It seems Blueview and the Massachusetts Highway Department have always been interconnected.

Bonus #1: The former Cogliano home was at that junction of Washington Street and 'old' Rt. 128 (Blue Hill River Road) and when the land was taken for the 'new' Rt 128 the house was moved, and they continued to live in it until 1998. At that time, when they sold the nursery land, the house was donated to Curry College. At 2 AM on May 31, 1998 the 7 room, 2 bath, colonial home was moved, and became part of Curry College, just a couple miles up Rt 138. <sup>[ix]</sup>

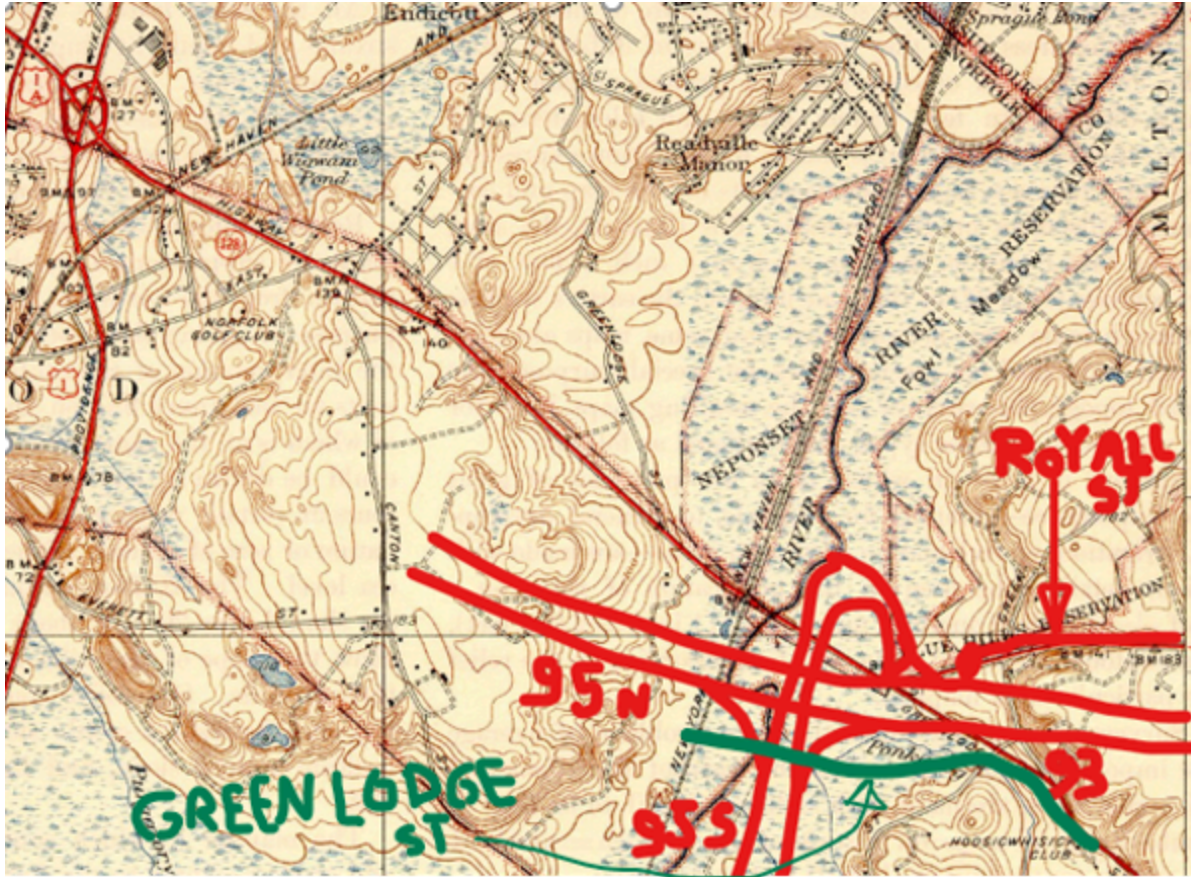
So, if you need any plants or shrubs, visit Blueview Nursery in Norton. You might run into Anthony Cogliano, another son of the original owners, who still works there. (As do other family members.) And if you are looking for information, (maybe you need some deer resistant plants

because you're tired of feeding those pesky deer!), ... whatever your needs their website provides a ton of helpful information. <http://blueviewnurseries.com/index.html>

Bonus #2: That cul-de-sac at the end of Royall Street, where we park to hike Fowl Meadow. It wasn't *always* a cul-de-sac. Originally Royall Street was 'old' Rt. 128 and as such it continued through where the Rt. 95/Rt. 93 Interchange is, and continued on. It met up with Greenlodge Street (Where Hoosic - Milton Golf Club is now.) crossed the Neponset River and the train tracks and continued to the rotary on Rt. 1 just outside downtown Dedham. And that whole stretch was 'old' Rt. 128. Who knew?







Before 'new' Rt. 128

After 'new' Rt. 128

And, roughly, what it's like now, with 'New' Rt.128 (AKA Rt 95. and Rt. 93) and Rt 95 to Providence superimposed on top.

With the building of Rt. 128 and Rt. 95, Green Lodge Street was relocated, and is now that bridge (with no access) you go under on Rt. 95 just south of the Rt 93/Rt 95 (AKA Rt 95/Rt 128) intersection.



Until next time,

Bob Vogel

---

[i] Bob Vogel photos

[ii] <http://blueviewnursery.com/index.html>

[iii] <https://www.topozone.com/massachusetts/norfolk-ma/city/canton-10/>

[iv] [http://www.canton.org/canton/Canton%20Mass\\_%20Historical%20Society.%20Canton%20Bicentennial%20Book.%20Chapter%201.htm](http://www.canton.org/canton/Canton%20Mass_%20Historical%20Society.%20Canton%20Bicentennial%20Book.%20Chapter%201.htm)

[v] Building Route 128, Tsipis & Kruh, p. 113.

[vi] Ibid.

[vii] [http://archive.boston.com/news/local/articles/2005/06/12/what\\_he\\_watched\\_he\\_now\\_oversees/](http://archive.boston.com/news/local/articles/2005/06/12/what_he_watched_he_now_oversees/)

[viii] [https://en.wikipedia.org/wiki/John\\_Cogliano](https://en.wikipedia.org/wiki/John_Cogliano)

[ix] [https://archive.org/stream/currycollege1999unse/currycollege1999unse\\_djvu.txt](https://archive.org/stream/currycollege1999unse/currycollege1999unse_djvu.txt)