



About

Bolt from the Blue: An EJP Raijin Zine is an unofficial Haikyuu!! fan-made zine featuring the fictional Japanese V.League team known as the EJP Raijin and imagining the characters Komori Motoya, Suna Rintarou, and Washio Tatsuki as they relate to the team.

This project intends to be a for-profit project with physical products, pending on results from the interest check.

This document serves as a summary of general information about the zine, application expectations, and contributor guidelines. It is a living document and will be updated with changes as needed.

If you have any questions, please reach out to the moderator team via Twitter direct messages ([@EJPzine](#)), [Tumblr ask box](#), or [email](#).

Zine Specifications

Theme and Content

All artwork, writing, and merch will focus on the EJP Raijin team with specific attention to Komori Motoya, Suna Rintarou, and Washio Tatsuki as they relate to the team.

This zine will accept both canon and AU content with some caveats:

- Crossovers with other media or series are not allowed (“fusions” i.e. adapting characters to other properties’ concepts without including that properties’ characters may be acceptable.)
- Other characters from Haikyuu!! are more than welcome, but the main focus should be on Komori Motoya, Suna Rintarou, and or Washio Tatsuki as they relate to the EJP Raijin
- As there is limited canon information EJP Raijin, the mod team will work with contributors to imagine a consistent roster and setting as needed.
- All contributors’ pitches will be subject to review and approval. Mods will work with contributors to ensure that pitches align with the vision of the zine and that contributors are excited to work on them.

This zine is SFW (safe-for-work). All work made for it should be intended for general audiences.

There will be no romantic relationships (“ships”) depicted in this zine.

Production Specifications

The zine will be 7x10 inches, perfect bound, and softcover.

Contributors will receive templates for their work as needed.

If the project moves forward with a physical fulfillment model, a digital PDF will be available to purchase as a standalone product as well.

Depending on results of the interest check, physical merchandise may include:

- Die-cut stickers
- Sticker sheets
- Small prints
- Acrylic keychains and/or pins
- Other potentially unique merch

Additionally, please note that production details may be subject to change depending on sales or other factors.

Application Guidelines

Contributors must be 18 years old or older at the time of acceptance.

Applicants may apply for multiple positions, but will likely be accepted to one position only.

Applications may include examples from fandoms other than Haikyuu!!, but at least one example must feature characters from Haikyuu!!. Additionally, while not required, it is highly encouraged to include examples of characterization for Komori Motoya, Suna Rintarou, and/or Washio Tatsuki.

Both page and merch artists will have the option to collaborate with a writer to provide illustrations to accompany their writing. Artists who indicate their interest for this opportunity may not necessarily be assigned a collaboration, and all collaboration work must be done in addition to their main role.

Page Artists

- Provide a link to a google drive folder and/or a portfolio link that includes at least three (3) fully-rendered illustrations.
 - At least one work should demonstrate background rendering capabilities. However, it is highly encouraged to include multiple examples with fully rendered backgrounds.
- All submissions should be SFW, up to the equivalent content rating of PG-13.
- You may include examples other than Haikyuu!!, but at least one example must feature characters from Haikyuu!!. It is highly encouraged to provide examples of your depictions of Komori Motoya, Suna Rintarou, and/or Washio Tatsuki.
- Applicants who may want to draw a short comic for the zine must include comic pages in their application examples.
- Both digital and traditional art are accepted, however traditional art must be reproduced at adequate quality for production.
- Please ensure that all links work and examples are viewable. **If the mods cannot access the examples/portfolio, we will not consider the application.**

Merch Artists

- Provide a link to a google drive folder and/or a portfolio link that includes at least two (2) or more merch designs.
 - Photos of the physical merch are recommended if possible.
 - Applicants without merch experience should provide three (3) or more colored illustrations instead.
- All submissions should be SFW, up to the equivalent content rating of PG-13.

- You may include examples other than Haikyuu!!, but at least one example must feature characters from Haikyuu!!. It is highly encouraged to provide examples of your depictions of Komori Motoya, Suna Rintarou, and/or Washio Tatsuki.
- Both digital and traditional art are accepted, however traditional art must be reproduced at adequate quality for production.
- Please ensure that all links work and examples are viewable. **If the mods cannot access the examples/portfolio, we will not consider the application.**

Writers

- Submit a **single** document via Google Docs with a compilation of **three (3) written samples**, no longer than 2500 words each (a small overage of ~100 words is fine).
- Every sample should start with:
 - Title
 - Link to published fic if applicable (e.g. on Ao3)
 - Fandom and ship(s)
 - Any tags or warnings you consider necessary
- All submissions should be SFW, up to the equivalent content rating of PG-13. A SFW excerpt from a NSFW fic is acceptable, but please indicate this in the beginning notes with other tags/warnings as needed.
- Excerpts from longer works are fine, but at least one sample must be a complete work under 2500 words.
- You may include examples other than Haikyuu!!, but at least one example must feature characters from Haikyuu!!. It is highly encouraged to provide examples of your characterizations of Komori Motoya, Suna Rintarou, and/or Washio Tatsuki.
- Pieces do not need to be newly written. They may be previously posted works.
- Please ensure that the document's "Share" setting is set to "Anyone with the link can view." **If the mods cannot access the link, we will not consider the application.**

General Contributor Expectations

- Contributors are responsible for completing their assigned work by the final submission date (December 29, 2023), and provide adequate proof of progress at each check-in.
 - If there are certain circumstances that would prevent a contributor from meeting a deadline, contributors should inform a mod as soon as possible. Mods will work with contributors to accommodate individual circumstances as best able.
 - In the case that a contributor needs to drop out of the project, the mods need to be informed by the first check-in period (October 8, 2023).
- Contributors must have a Discord account or be willing to make one. All zine communication will be done through a zine-specific server.
 - Contributors are expected to read and adhere to server rules and be respectful.
- All pieces created for the zine must remain zine-exclusive until after the zine is completed. Mods will indicate a specific date when pieces can be made public.
 - Contributors retain the rights to their work and are free to do what they want with it after the zine-exclusivity period is over.
- Contributors will not share the content of the zine or publicly discuss their zine WIPs without mod approval. Previews of contributors' piece(s) will be posted during the pre-order period.
- Contributors will receive feedback on their work during the creation period.
- Contributors must have a PayPal account to receive any profits. Alternative methods may be possible but are not guaranteed. Please reach out to the team to confirm if the method of payout you require will be possible.

Page Artists

Page artists will be asked to create at least one page of artwork, but are welcome to fill up to four if they wish (i.e. two or more single pages, double-page spreads, a multi-page comic, or any combination). The creation period has been extended to be mindful of those working on multiple pieces.

Artwork will:

- Conform to print production standards (typically it must be at least 300 dpi at full print size). Details and templates will be provided at the beginning of the creation period.
- Depict a concept aligned with the zine's vision and featuring EJP Raijin.

There may also be an opportunity for artists to work with a writer to create accompanying spot illustrations for their fic, but this is not required.

Merch Artists

Merch artists will be asked to design at least one piece of merch, with a potential opportunity to create more. The creation period has been extended to be mindful of those working on multiple pieces.

Merch designs will:

- Follow productions specs as given by manufacturers and relayed by the mod team
- Depict a concept aligned with the zine's vision and featuring EJP Raijin

Additionally, merch artists may be asked to design "stretch goal" merch where production of said merch is contingent on meeting a set sales goal, and should understand that production may not move forward with that design if requisite sales numbers are not met.

Merch artists will have the opportunity to indicate which type of merch they would prefer to work on.

There may also be an opportunity for artists to work with a writer to create accompanying spot illustrations for their fic, but this is not required.

Writers

Writers will be asked to write a fic between 1000 and 2000 words. Fics will:

- Be new, original pieces written specifically for this project
- Follow formatting in accordance with the zine's style guide (to be provided during the creation period)
- Depict a concept aligned with the zine's vision and featuring EJP Raijin

Writers may have the opportunity to work with an artist to have spot art created to accompany their fic, depending on interest.

Please note that the upper word count limit is subject to change, but will be confirmed prior to the creation period.

Compensation and Financial Transparency

This zine aims to break even, meaning that any profits will first go towards covering free copies of the zine, merch, and shipping for all contributors. Any additional profits will be additional compensation for contributors.

Should the zine not reach required profits to provide full bundles, contributors will have the opportunity to purchase items at production cost.

The financial mod will be running the project finances through a cooperative project account, which ensures that more than a single person has access to funds and oversight over the finances should any issues arise. Funds for this project are kept separate from other projects, and all transactions/costs associated with the project (minus any sensitive, private information) will be compiled for review by both the mod team and contributors.

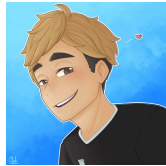
Zine Schedule

This schedule is subject to change to accommodate a variety of factors and will be updated to reflect any changes as soon as possible.

Interest Check	July 1 – July 21
Contributor Applications	July 26 – August 27
Application Results	September 3
Contributor Acceptance Deadline	September 9
Pitch Period	September 10 – 16
Check-in 1	October 8
Check-in 2	November 19*
Check-in 3	December 17*
Final Submission	January 21
Pre-orders Open	January 25
Pre-orders Close	February 29
Production Period	March – April
Shipping and Fulfillment	May – June

*The mod team recognizes that these submission dates are near major holidays and possible academic conflicts. Additional weeks have been built into the schedule accordingly, as well as to account for an extended creation time for contributors working on multiple pieces.

Zine Moderators



Ana

Social Media

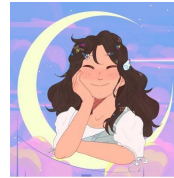


[Twitter](#) | [Ao3](#)

I am a firm believer that 'electric love' by BØRNS is EJP Raijin's personal theme song ⚡

Experience

- Head/Server owner of SakuAtsu Fan Server
- Professional non-profit Social Media Manager/Secretary-General



Cara

Art, Production, Finance, Organization



[Twitter](#) | [Twitter](#) | [Tumblr](#) | [Carrd](#)

I put the AAAAAAAAAA in EJP Raijin ❤️

Experience

- [A Monsters Ball: A Haikyuu National Team Zine](#) - Production, Finance
- [「阿咩」To Have You As A Partner: An Iwaizumi x Oikawa Wedding Zine](#) - Organization, Social Media, Writing, Production, Finance, Shipping, Discord
- [This Side of Paradise: A Haikyuu x Pokémon Zine](#) - Production, Shipping
- [Haikyuu!! Gone Wild: A Haikyuu Animal Zine](#) - Writing, Production, Finance
- See full moderator experience [here](#)



Esque

Writing, Art, Graphics, Formatting, Organization



[Twitter](#) | [Tumblr](#) | [Ao3](#) | [Carrd](#)

They didn't have to make Komori like that but they DID and I love him

Experience

- [The Great Chuunosuke Chronicles](#) - Writing, Organization, Layout
- [to be determined: a sunaosa anthology project](#) - Solo Mod
- [Desire: An AsoRyuu Marriage Zine](#) - Layout, Graphics
- [SunaOsa Exchange](#) - Graphics
- See contributor experience [here](#)



Black

Shipping



[Twitter](#) | [Tumblr](#) | [Carrd](#)

I like it when they hit the ball

Experience

- [Geass Fragments](#) - Layout
- [The Great Chuunosuke Chronicles](#) - Finance, Shipping
- [Full Steam Ahead](#) - Co-lead Mod
- [From ShinRa with Love](#) - Senior Mod
- [Honorary Maids of London](#) - Solo Mod
- [DR Calendar Project 2022](#) - Solo Mod
- [Decade of Despair DR Anthology](#) - Lead Mod
- [3.10.75 A Waver Velvet Anthology](#) - Solo Mod
- [A Team Rider Anthology](#) - Solo Mod
- [B4V3 DR Zine](#) - Lead Mod
- [Cafe Harmony DR Zine](#) - Lead Mod

Frequently Asked Questions

What is a zine?

For the purposes of this project, we define a fanzine or zine as: a collection of fan-created artwork and writing centered around a common theme.

How will contributors be compensated?

The zine aims to break even, meaning that any profits will first go towards covering free copies of the zine and merch + shipping, for all contributors. Any additional profits will be additional compensation for contributors.

Contributors are guaranteed a digital PDF of the zine at minimum, and should the zine not reach required profits to provide free copies, may purchase zines/merch at production cost.

Where will the zine ship from? Where will it ship to?

The zine will be shipped from the USA, and will accept international orders. An updated list of countries we will ship to will be provided when pre-orders open.

How many contributors are planned?

Based on interest check responses, this project will proceed with a smaller contributor team, and the mod team has adjusted production specs accordingly.

This project plans to accept around 16 artists, 4 writers, and 3 merch artists, including guest contributors. These numbers are subject to change as needed.

Is this zine associated with the discontinued EJP zine *High Voltage*? Will you consider applications from that project?

No, *Bolt from the Blue* was conceived independently of that project, and is a wholly new endeavor. Please submit a new application to this project if you are interested in being a contributor.