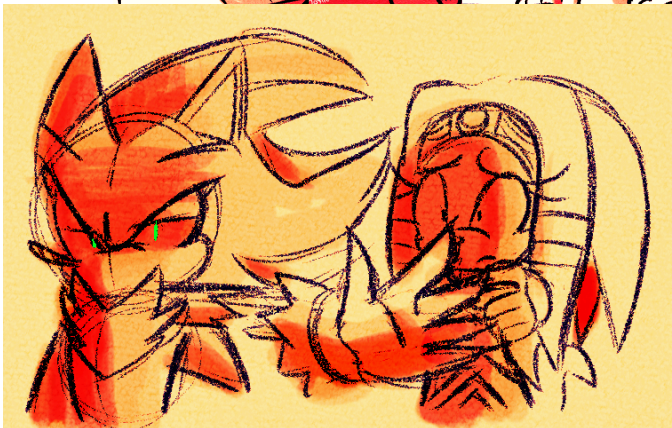
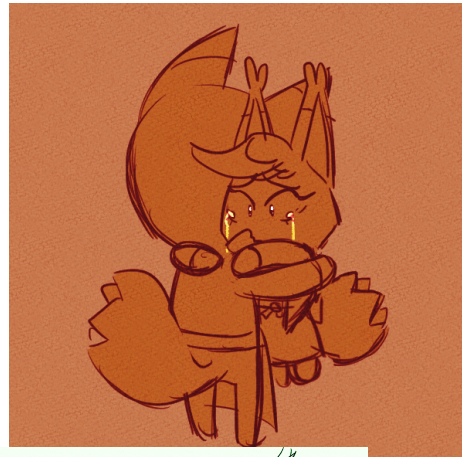


NOTICE: In light of current events, **20%** of an entire purchase (*list of commission items*) will be donated to one of *many* organizations in need. Organizations will be picked from [this list](#), but if you wish to donate to one not featured, feel free to ask me about it!

This will change each month to donate to other organizations, though may change sooner depending on donation status (a la, the fund is no longer accepting donations as they've been sufficiently supported).

STATUS: OPEN!

SKETCHES.



\$20 - HALF BODY.
+ CHARACTER +%50

\$25 - FULL BODY.

LINES.



\$30 - HALF BODY.



\$35 - FULL BODY.
+ CHARACTER +%50

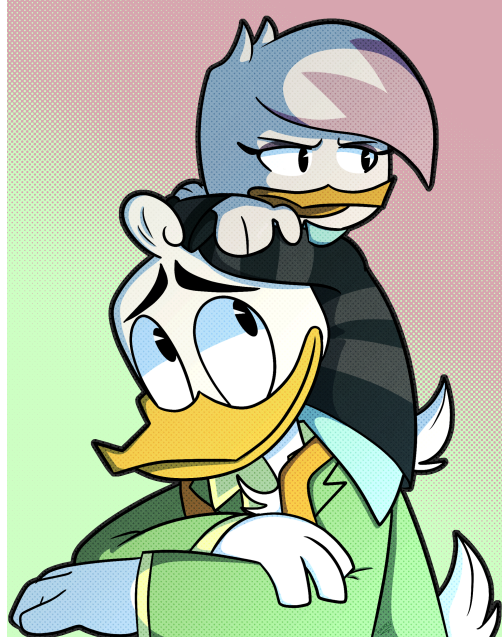
FLATS.



\$35 - HALF BODY.

\$40 - FULL BODY.
+ ONE CHARACTER. + %50

SHADED.



\$45 - HALF BODY.



\$50 - FULL BODY.
+ ONE CHARACTER + %50

VECTOR STYLE.



\$30 - HALF BODY.

\$45 - FULL BODY.
+ CHARACTER +%50

PAINTING STYLE:



\$30 - full body.

Buy 2 for \$45!

GUIDELINES:

DO draw:	DON'T draw:
<ul style="list-style-type: none">* canon* ocs* crossovers* pairings* aUs	<ul style="list-style-type: none">* nsfw / fetishes* recolors* robots* genderbends

- payment should be made before i start drawing, through paypal.
- it's crucial i make an invoice for you - *do not pay me or send me money without commission verification.*
- you are entitled to a wip after two weeks.
- PLEASE do not ask me repeatedly how the commission is coming along. i have life responsibilities outside of drawing, including a job, and i deal

with anxiety and depression, so asking repeatedly pressures me and makes me anxious about your commission.

- i draw sonic, animal crossing, ducktales, gravity falls, steven universe, etc. ask me about other fandoms!
- i can adapt to various styles! if you want something specific, please let me know! i know my style tends to fluctuate, too, so if you want them drawn a certain way, give me a heads up!
- i typically make simplistic backdrops to go with pieces, but if you want a proper background, that will cost extra. just double check with me about it!
- i don't do refunds after the completion of the piece, but if it's been two months and i haven't drawn your commission, you're allowed to ask for one.
- please provide clear reference sheets where necessary. i don't draw by text description.
- i reserve the right to deny a commission.
- drawn commissions will typically be provided in a .png format, given directly to the commissioner without watermark.
- they will also, with a watermark, be posted on the corresponding tumblr blogs: toxikku / mephileswhisper / blaathers so that customers are able to reblog it to their personal blogs if required.
- as for donations, 20% of your entire purchase (so say you bought more than one item) is taken and donated to an organisation stated at the top of the sheet. proof of donations will be provided post-payment.
- if you're interested or have a question about my commissions, please either im / send me a message through the askbox / reply to my commission post, or email me directly at toxikkuqueries@hotmail.com. i recommend the latter if only because tumblr's notifs are buggy and my blog appearances can be spotty.
- please note that each individual commission equals one slot.
- please check commission status (listed at the very top of this page!) before making requests!

SLOTS:

- [OPEN.]
- [OPEN.]
- [OPEN.]

RESERVED

-- aka, if you're still interested and slots are full, I'll message you when they are open again!

- [OPEN.]
- [OPEN.]
- [OPEN.]