

# GA TUESDAY



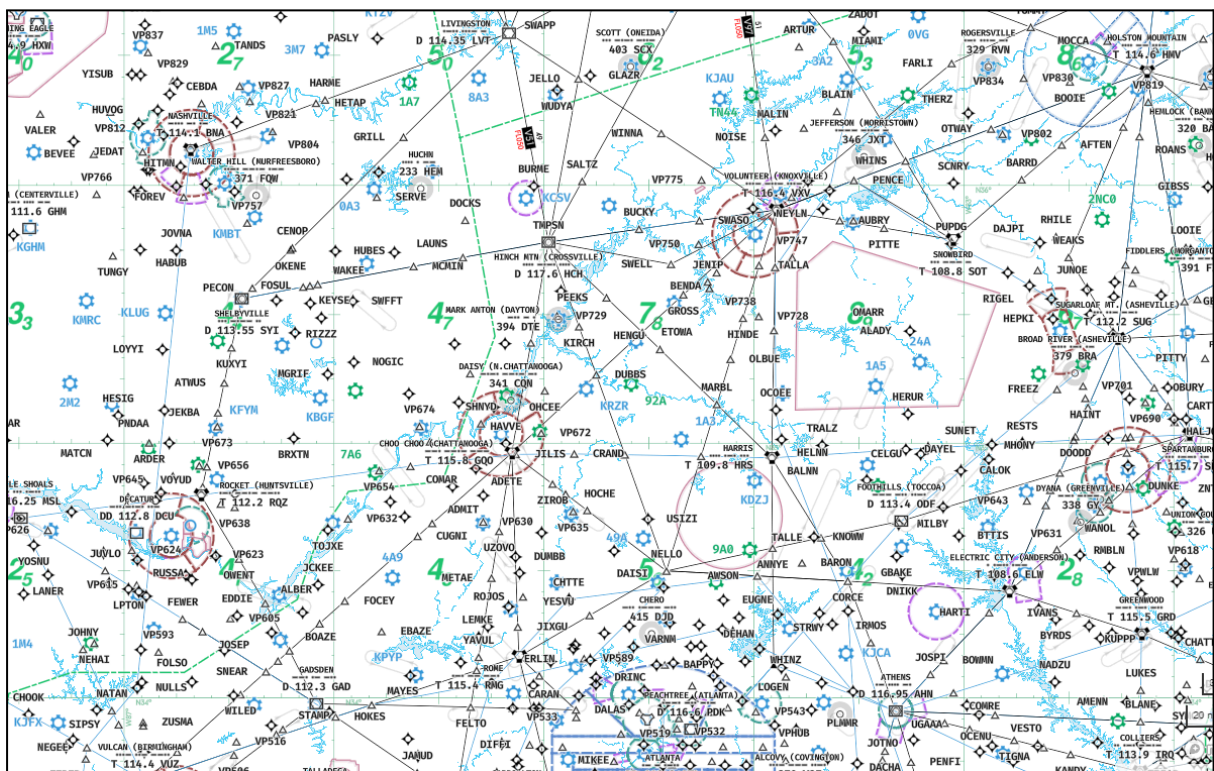
## The Pilot Club

*"If you can't stand the heat, get out of Georgia"*

MARCH 21, 2023

**INSTRUMENT FLIGHT RULES**

Not a TPC Member?! Click [here](#) to join!



- **YOU MUST SIGN UP NO LATER THAN MARCH 19th HERE:**  
<https://vats.im/march21-signups> **\*\*You will receive ramp assignment and departure time one day prior to the event.**
- Recommend airplane: single or twin engine 100-150 kts
- Set the weather as you like. Most use live weather with time set back a few hours.
- Moving map GPS: ForeFlight, FltPlan Go, Garmin Pilot.
- Bring your camera and share your pictures in our Discord.

## Suggested add-ons & charts

1. IFR Enroute Low Altitude (L-25)

## 2. IFR Enroute Low Altitude (L-18)

FSX/P3d	X-Plane 11	MSFS 2020	
	<a href="#">Mc Ghee Tyson</a> <a href="#">KCHA - Chattanooga TN 1.1</a> <a href="#">KPDK DeKalb Peachtree Airport 1.1.1</a>	<a href="#">KCHA Lovell Chattanooga v1.0.0</a> <a href="#">DeKalb-Peachtree Airport (KPDK)</a>	<b>Primary Scenery</b>
		<a href="#">USA Small-Medium Airport Layout Fixes</a> <a href="#">Truist Park</a> <a href="#">KPDK Peachtree-DeKalb County Airport Updates &amp; Enhancements</a> <a href="#">Mercedes-Benz Stadium</a>	<b>Secondary Scenery</b>
		<a href="#">Scenery Map from Flightsim</a>	<b>Resources &amp; Utilities</b>

## Flight plan

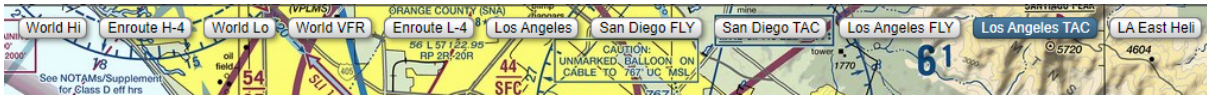
This event is a joint flight along with The Pilot Club's **Discovery Flight** Series. Both events are focusing on **Instrument Flight Rules (IFR)**. With that said you are allowed to fly VFR if you wish. We are flying two legs in order to get from McGhee Tyson (TYS) to Dekalb-Peachtree (PDK).

LEG 1	LEG 2
KTYS KNOXV7 DCT GROSS V115 GQO KCHA	KCHA CHA8 DCT RMG V333 DALAS KPDK

Use the briefing section to visualize the route in your electronic flight bag (EFB). The challenge of VFR is to not become *Children of the Magenta*. The Flight Ops team wants you to understand the flight plan and special rules with certain airspace; then execute the plan. Use your charts as reference instead of a crutch.

Use the dynamic charts that are made available in SkyVector to see sectional, TAC, FLY,

and other specialized charts for the area.



# A NIGHT OF DISCOVERY!

## Standard briefing

**The charts will be distributed in the Discord Thread.** The departures (SID) already have a set of instructions (see below). We'll need to figure out the arrivals the day-of, based on winds or ATIS.

### Knoxville 7 departure

This SID requires takeoff minimums (for standard minimums, refer to airport chart):  
Rwys 5L/R, 23L/R: Standard (or lower than standard, if authorized).

RWY	INITIAL CLIMB	TOP ALTITUDE
5L / 5R	Climb on heading 051° or as assigned for vectors to filed route.	6000
23L / 23R	Climb on heading 231° or as assigned for vectors to filed route.	

**ROUTING:** MAINTAIN 6000 (or assigned lower altitude). EXPECT clearance to requested altitude/flight level 10 minutes after departure.

Once you've taken off and followed ATC instructions to satisfy the SID head directly to **GROSS** waypoint in order to get onto V115 airway. Follow that airway to **CHOO CHOO VORTAC** (GQO). Make sure to establish an arrival with ATC. **Perform a full stop, taxi, then get an IFR clearance to the next leg.**

### Chattanooga 8 departure

#### TAKEOFF MINIMUMS:

Rwys 15, 33: Not authorized-ATC.  
Rwy 2, 20: Standard.

#### TAKEOFF OBSTACLE NOTES

See TAKEOFF OBSTACLE NOTES page (10-30B1).

RWY	INITIAL CLIMB	TOP ALTITUDE
2	Climb on heading 022° to 2400.	5000
20	Climb on heading 202° to 2200.	

**ROUTING:** EXPECT vectors to join assigned route. MAINTAIN 5000 or assigned lower altitude. EXPECT further clearance to flight altitude 10 minutes after departure.

Once you've taken off and followed ATC instructions to satisfy the SID head directly to **ROME VORTAC** (RMG). Then head southeast using V333 airway to **DALAS** waypoint. Make sure to establish an arrival with ATC. **Perform a full stop, taxi, and we'll see you at the FBO for some drinks.**

## Weather

As part of the standard briefing, weather conditions should be monitored. Here's a list of reports to consider:

### Adverse conditions

#### Convective

[Convective SIGMETs](#) (WST)

[Convective Watches](#) (WW)

[Graphical AIRMETS](#)

#### Synopsis

#### Weather charts

[Surface Analysis](#)

[Daily US Weather Map](#)

### Current conditions

[METARs](#)

[NWS RADAR Site](#)

[PIREPS](#)

[SATELLITE](#)

### En route forecast

[GFA Tool](#)

[Low Level SIGWX Progs](#)

### Destination forecast

[TAF decoder](#)

[TAFs](#)

### Wind and temps aloft (FB)

[By region](#)

### Aviation notices

[Special Use Airspace](#)

[NOTAM Search](#)

[Notices to Airmen](#)

### ATC delays

[National Airspace System Status](#) (FSS Command Center)

## A bit of realism

We aim to interject real world parameters to the VFR flights. Read and understand the procedures prior to flight. Any questions or comments contact the Flight Ops team.

1. Read [§ 91.113 – Right-of-way rules: Except water operations](#)
2. Read [§ 91.119 – Minimum safe altitudes: General](#)
3. Read [§ 91.127 – Operating on or in the vicinity of an airport in Class E airspace](#)
4. Read [§ 91.129 – Operations in Class D airspace](#)
5. Read [§ 91.130 – Operations in Class C airspace](#)
6. Read [§ 91.131 – Operations in Class B airspace](#)
7. Read [§ 91.133 – Restricted and prohibited areas](#)
8. Read [§ 91.159 – VFR cruising altitude or flight level](#)
9. Read [§ 91.179 – IFR cruising altitude or flight level](#)
10. Read [§ 91.215 – ATC transponder and altitude reporting equipment and use](#)

### Restricted airspace

- Class Charlie at McGhee Tyson Airport.
- Class Charlie at Chattanooga Airport.
- Class Bravo at Hartsfield-Jackson Atlanta International Airport.
- Class Delta at Dobbins Air Force Base.
- Class Delta at Dekalb-Peachtree Airport.

## Airport information

Take a few minutes to become familiar with the airport, the runway diagrams, etc. Most of the information can be found on Skyvector’s site. Each airport links to their respective pages.

### Departure

Name	ICAO	Elevation <sup>1</sup>	Runways
<a href="#">Mc Ghee Tyson Airport</a>	KTYS <a href="#">NOTAM</a>	986 ft	05L/23R, 05R/23L

On August 1, 1930, the original **McGhee Tyson airport** opened, named for Charles McGhee Tyson; it was built on 60 acres in West Knoxville. The development of TYS helped the City of Alcoa diversify its economy and gain its economic independence from what is today Arconic Inc.

### Full Stop

Name	ICAO	Elevation <sup>1</sup>	Runways
<a href="#">Lovell Field Airport</a>	KCHA <a href="#">NOTAM</a>	682 ft	02/20, 15/33

---

<sup>1</sup> All elevations are indicated as feet mean sea level.

The first scheduled airline flight in Tennessee took place in Chattanooga in 1928 at Marr Field, dedicated in December 1919, named for Walter L. Marr, off present-day Amnicola Highway. Chattanooga was a stopover on the Contract Air Mail route served by Interstate Airlines between Atlanta and Chicago. Charles Lindbergh, the world-famous aviator who had piloted the Spirit of St. Louis over the Atlantic Ocean in May 1927, flew into Marr Field on October 5, 1927.

## Arrival

Name	ICAO	Elevation <sup>1</sup>	Runways
<a href="#">DeKalb-Peachtree Airport</a>	KPDK <a href="#">NOTAM</a>	998 ft	03R/22L, 16/34, 03L/22R, H1

The property was originally part of Camp Gordon, a World War I military training camp. That facility closed in 1922. (The Army re-created Camp Gordon during World War II, but built it in Augusta, 150 miles [240 km] away, and it has since been renamed Fort Gordon.) In 1940, the United States government authorized construction of a military airport on the former site of the Chamblee camp. The airport began operations on March 22, 1941, a few months before the U.S. entry into World War II, as Naval Air Station Atlanta.

## VATSIM

One of the goals during the flight is to have air traffic control support from real people through the VATSIM network. Register for a free account at [vatsim.net](https://vatsim.net) and complete the new member orientation in order to join the network.



When filing a flight plan with VATSIM make sure to add the following remarks to help support the club and increase our presence on the network.

**/RMK OPERATED BY THEPILOTCLUB.ORG**

## Additional flights

Every **first Tuesday** of the month we will embark on touring the United States one state at a time. The goal is to visit the capital and/or famous landmarks of each state. Every **third Tuesday** of the month we will kick back and relax with a Caribbean tour. The goal is to make it from Trinidad to Florida.

# Flight Ops General Aviation Team

- Marc, TPC444

For more information about this organization visit [thepilotclub.org](https://thepilotclub.org). There is also good information on the [Standard Operating Procedures](#) page. We also have a very active Discord server.

## References

1. [https://www.faa.gov/air\\_traffic/flight\\_info/aeronav/digital\\_products/vfr/](https://www.faa.gov/air_traffic/flight_info/aeronav/digital_products/vfr/)
2. <https://notams.aim.faa.gov/notamSearch/nsapp.html#/>
3. <https://tfmlearning.faa.gov/publications/atpubs/NTM/not0503.html>
4. <https://www.thinkaviation.net/notams-decoded/>
5. <http://www.moratech.com/aviation/notam-abbrev.html>
6. <https://www.aviationweather.gov/briefing>