



# Digital Signage Outdoor - Model K1 65" Wall Mounted

November 30th, 2023

◉ Lighting Protection

◉ Smart Cooler

◉ Leakage Protection

Guangdong HUSHIDA Electronic Technology Co.,Ltd.

# Product Features

- High-definition highlight display: The screen body adopts an industrial-grade LCD panel, a new A-standard panel, and a full viewing angle display with no distortion of 178 degrees up, down, left, and right. The color saturation is higher, and the color adding technology dynamically adjusts the color balance, making the image more layered, the color brighter, and the details clearer
- Simple design: The shell is made of 1.5mm galvanized plate with waterproof edges, meeting IP55 protection level. The glass is made of 5mm ultra-white tempered glass with a light transmittance of  $\geq 98\%$  and high light transmittance. It is equipped with heat dissipation components and electronic parts inside, which can adapt to Various outdoor environments, waterproof, dustproof, moisture-proof, corrosion-proof, sun-proof, and explosion-proof
- Split-screen playback: supports one-split screen, two-split screen, three-screen, and multi-split screen playback to meet playback requirements in different scenarios.
- Diversified display: You can set video pictures, rolling subtitles, time, weather, picture carousel interval and other functions
- Cloud publishing: Cloud platform information publishing, no need to install software, log in to the cloud platform anytime and anywhere to remotely control any networked advertising equipment, and can be centrally managed across regions
- Interactive templates: There are static and dynamic online templates for download, eliminating the trouble of making promotional advertisements.
- Start playback; support breakpoint memory function; support scheduled power on and off function, unattended around the clock; support Chinese, English and other multiple languages; support picture playback, rotation, zoom, pan, slide show and other switching effects
- Stand-alone use: When the network is disconnected, it can be used as a stand-alone version. It can still produce diversified content through powerful background information publishing software, then export and copy it to a memory card, and then insert it into an advertising machine to play it in a loop.

- Applicable to multiple scenes: can be used in commercial streets, bus stops, airports, train stations, newspaper columns, campuses, etc.

# Specifications

## Display

Size	65 inch
Screen Type	LCD A Grade
Aspect Ratio	16:9
Responsive Time	6.5ms
Displaty Area	1431(H)*806(V)mm
Resolution	1920(H)*1080(V)
Refresh Frequency	60Hz
chromaticity	1.07b(10 bit)
Color Gamut NTSC(Typ)	72%
Contrast(Typ)	1200:1
Viewing Angle	178°(H/V)
Backlight Type	E-LED
Screen Brightness(Typ)	2000cd/m²
Life Time	≥50000 hours

## Operation System

System Version	Android 7.1
Ram	2G DDR4
Rom	16G

CPU	RK3288 Cortex-A17 Quad Core
GPU	Mali-T764
Interface	Power, WIFI, Audio, LAN, USB*2, TF, DC, HDMI

## Electrical

Power Input	100-240V~50/60Hz
Max power consumption	480W
Cooler	<p>Intelligent cooling system, uniquely designed air duct and main board, automatically adjusts wind speed and volume</p> <p>Intelligent temperature sensing system, automatically turns off the display when the temperature reaches 65°C</p> <p>-5°C self-start heating/optional</p>

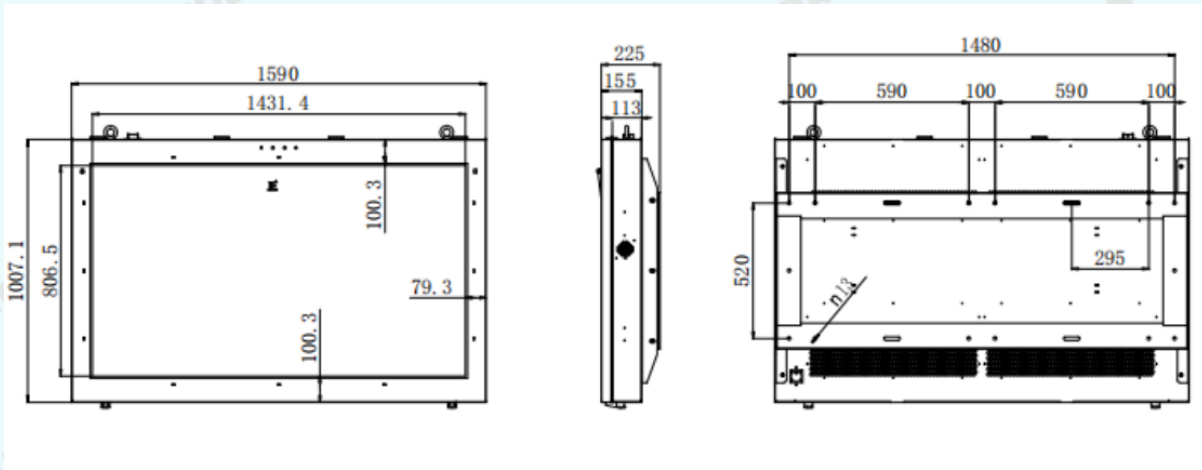
## Physical Parameters

Machine Size (l × w × t)	1590×1007.1×155mm
Speaker	Waterproof 10W
Lighting Protection	Class 3
Leakage Protector	Yes
Power	Industrial Power
Net Weight	///
Gross Weight	///

# Enviroment

Working Temperature	-30℃~+50℃
Working Humidity	5%~95%RH
Stocking Temperature	-30℃~+50℃
Stocking Humidity	5%~95%RH
Working Altitude	Below 5000meters

# Size Chart



# Contact HUSHIDA Team

Email: [support@hushidaglobal.com](mailto:support@hushidaglobal.com)

WhatsApp: +1 909 905 7781

Phone: +86 18576560374

Website: <https://hushidaglobal.com>

Retail Website: <https://www.hushidasmart.com>

“互动视界，智达未来”

“Interactive Vision, Intelligent  
Future”

