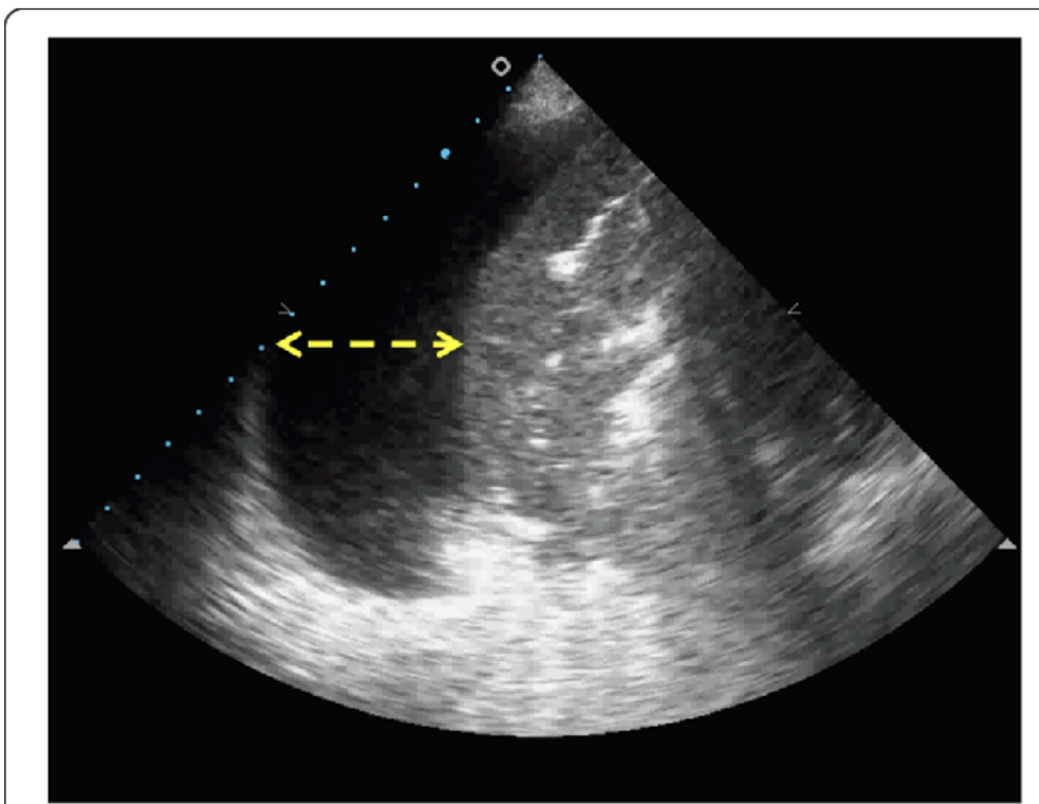


MCQ Guidelines

1. Questions must be your own original content.
2. Ideally use images either from QpathE that you obtained or talk to faculty here. Images from the internet are only accepted with approval and **must be cited**. Ideally you use images you have obtained.
 - a. Minimum of 75% of questions **MUST** have images associated with them.
3. Each question must have the correct answer highlighted.
4. Each question must have an explanation as to why an answer is correct or incorrect.

Example of inadequate submission:

-Lacks image citation, correct answer not indicated, no explanation given, simplistic question with no correct answer (that's ascites under the diaphragm, not a pleural effusion).



2. What finding is seen in this ultrasound of the lung?
- a. B lines
 - b. A lines
 - c. Hepatization
 - d. Pleural effusion

